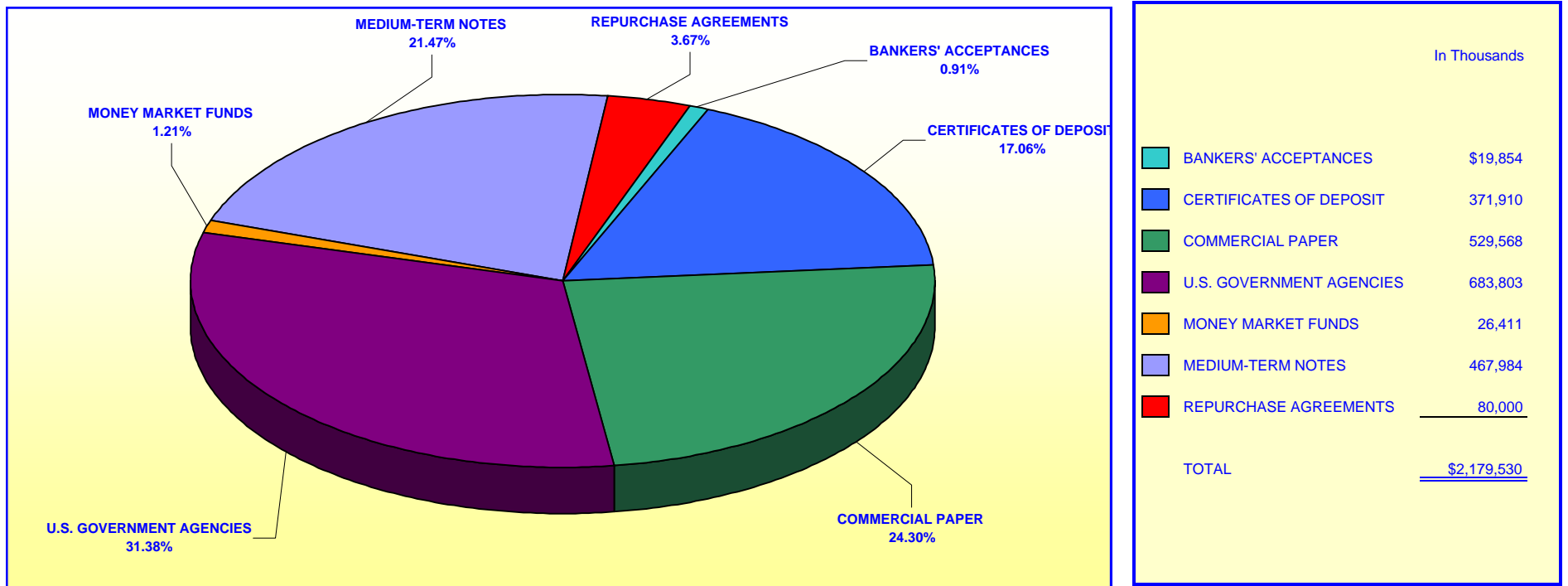


**ORANGE COUNTY TREASURER - TAX COLLECTOR  
ORANGE COUNTY EDUCATIONAL INVESTMENT POOL  
PORTFOLIO COMPOSITION - COMBINED \*\***

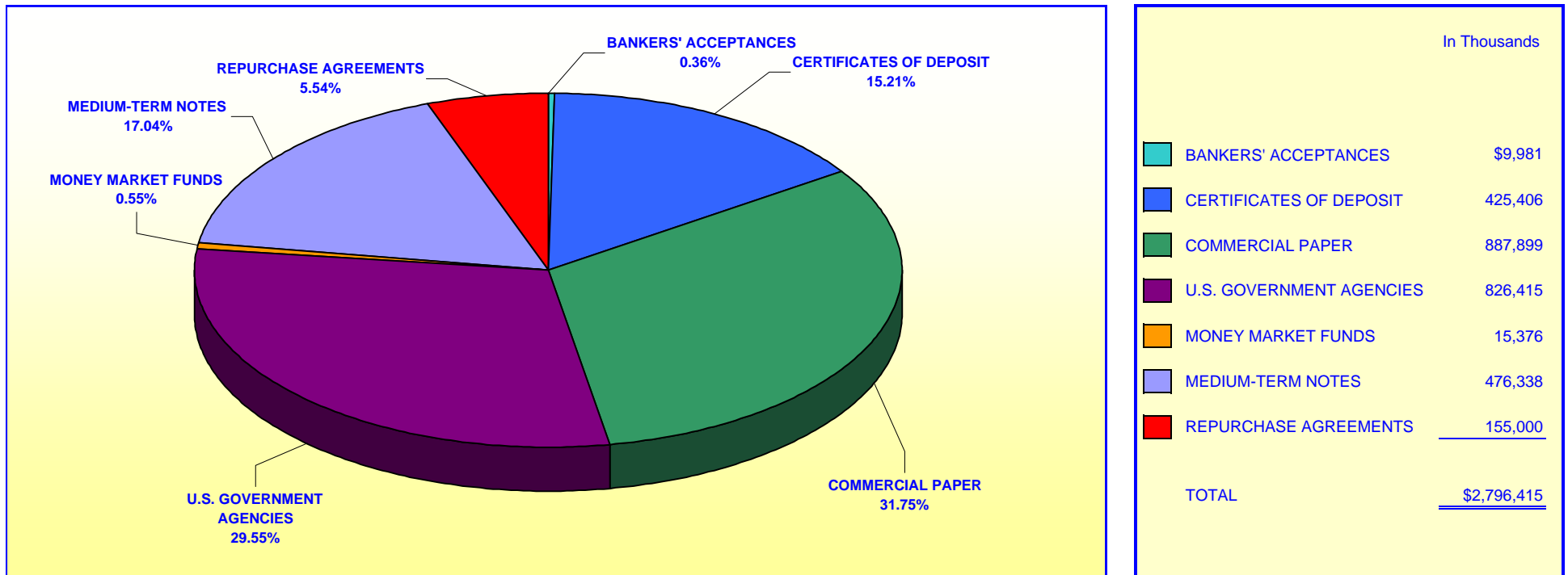
November 30, 2004



***Investment Composition Is In Compliance With The Orange County Treasurer's Investment Policy Statement***

***\*\* Calculated Based Upon Market Value at 11/30/2004***

**ORANGE COUNTY TREASURER - TAX COLLECTOR**  
**ORANGE COUNTY INVESTMENT POOL**  
**PORTFOLIO COMPOSITION - COMBINED \*\***  
**November 30, 2004**



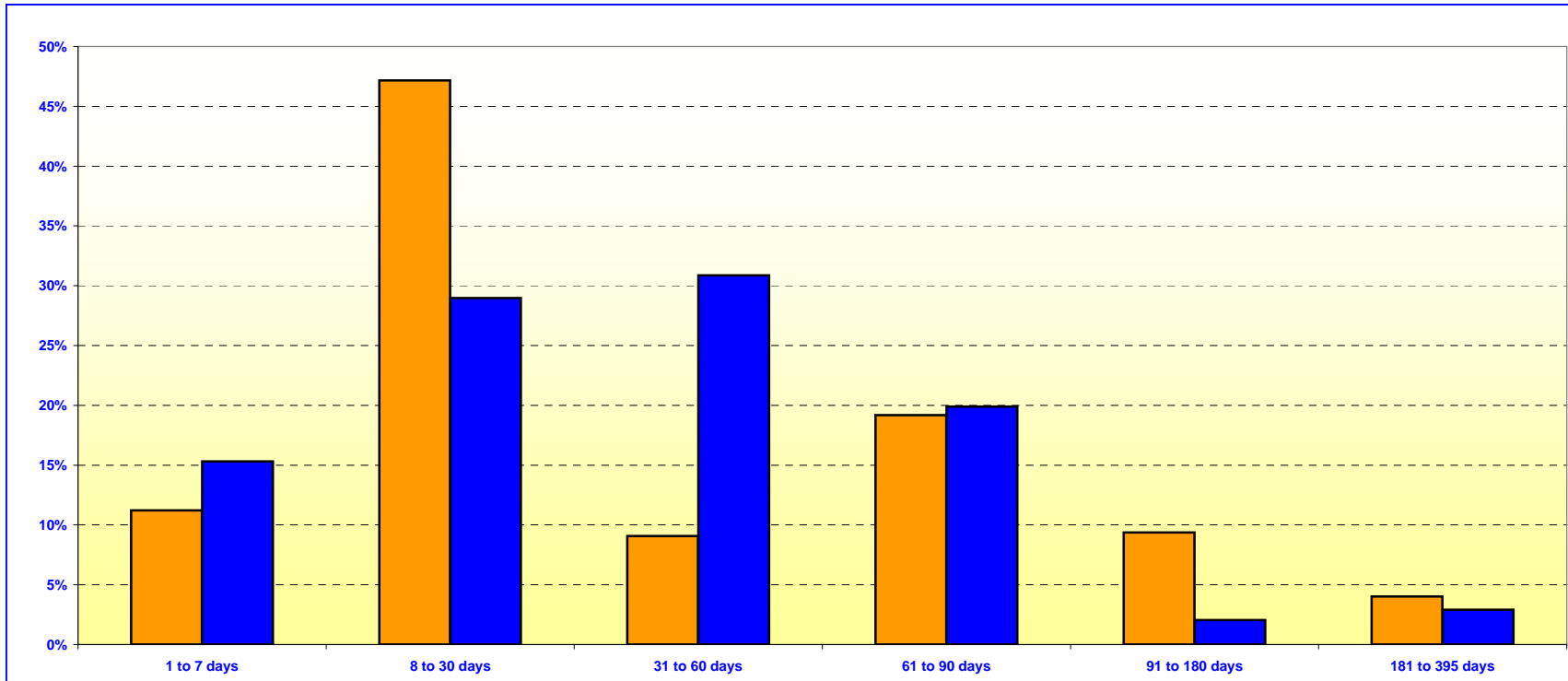
***Investment Composition Is In Compliance With The Orange County Treasurer's Investment Policy Statement***

**\*\* Calculated Based Upon Market Value at 11/30/2004**

**ORANGE COUNTY TREASURER - TAX COLLECTOR**  
**ORANGE COUNTY MONEY MARKET FUND AND EDUCATIONAL MONEY MARKET FUND**

**MATURITIES DISTRIBUTION**

November 30, 2004



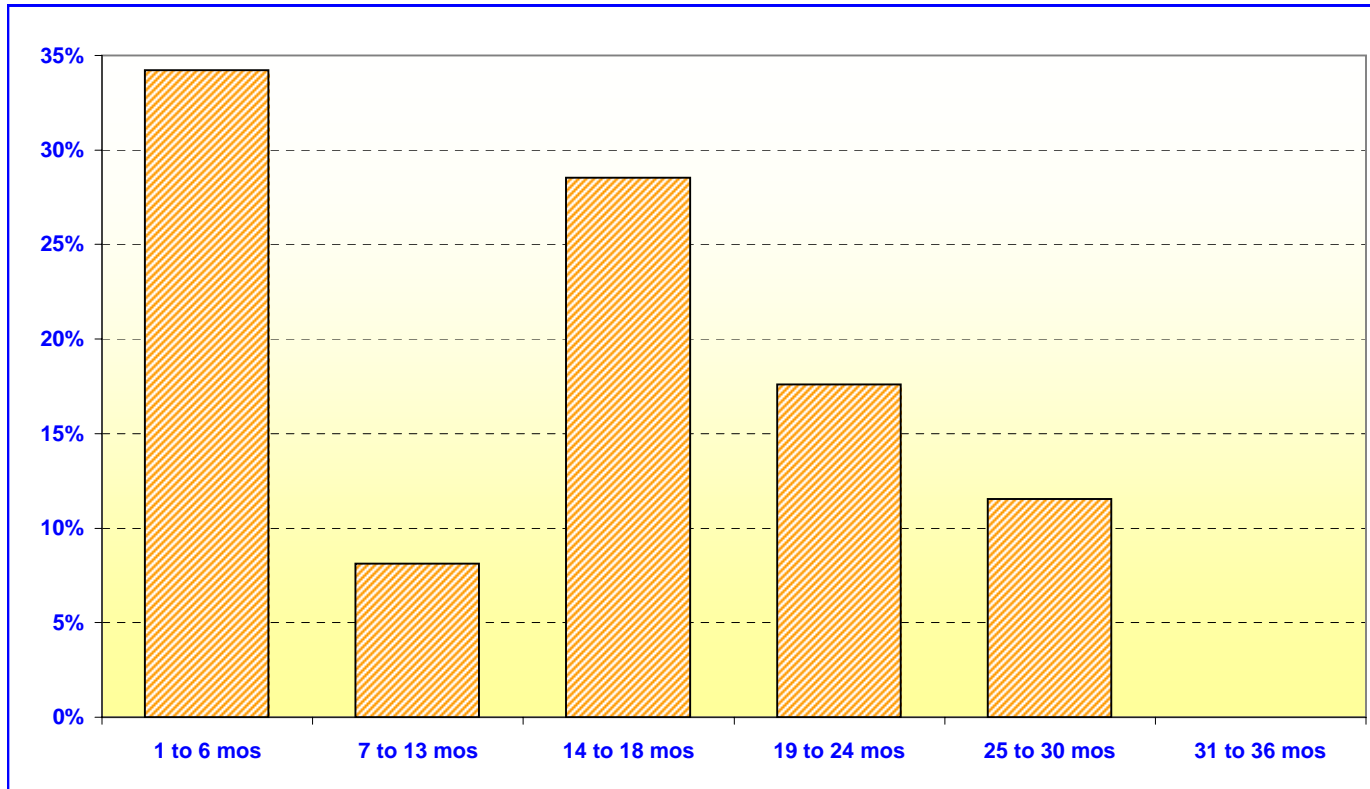
<b>O.C. INVESTMENT POOL MONEY MARKET FUND</b>		
	In Thousands	%
1 TO 7 DAYS	\$238,377	11.21%
8 TO 30 DAYS	1,002,950	47.16%
31 TO 60 DAYS	192,829	9.07%
61 TO 90 DAYS	407,672	19.17%
91 TO 180 DAYS	199,250	9.37%
181 TO 395 DAYS	85,542	4.02%
<b>TOTAL</b>	<b>\$2,126,620</b>	<b>100.00%</b>

<b>O.C. EDUCATIONAL MONEY MARKET FUND</b>		
	In Thousands	%
1 TO 7 DAYS	\$262,611	15.32%
8 TO 30 DAYS	496,814	28.97%
31 TO 60 DAYS	529,175	30.86%
61 TO 90 DAYS	341,075	19.89%
91 TO 180 DAYS	35,000	2.04%
181 TO 395 DAYS	50,000	2.92%
<b>TOTAL</b>	<b>\$1,714,675</b>	<b>100.00%</b>

***Maturity Limits Are In Compliance With The Orange County Treasurer's Investment Policy Statement***

Floating Rate Notes are deemed to have a maturity date equal to their next interest reset date.  
 At November 30, 2004, Floating Rate Notes comprise 10.97% and 14.96% of the O.C. Money Market Fund and Educational Money Market Fund respectively.

**ORANGE COUNTY TREASURER - TAX COLLECTOR**  
**ORANGE COUNTY INVESTMENT POOL - EXTENDED FUND**  
**MATURITIES DISTRIBUTION**  
**November 30, 2004**



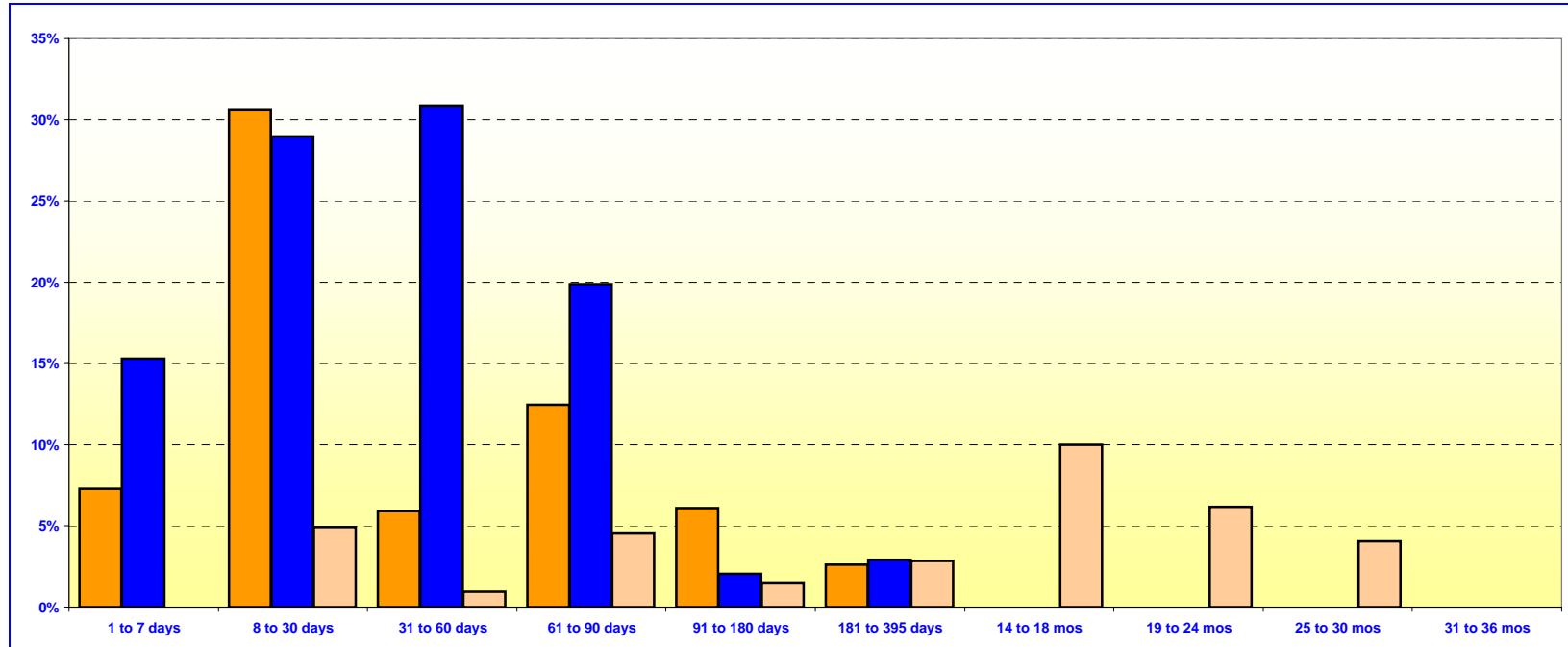
<b>O.C. INVESTMENT POOL EXTENDED FUND</b>		
	In Thousands	%
1 TO 6 MOS	\$391,910	34.21%
7 TO 13 MOS	92,965	8.11%
14 TO 18 MOS	326,900	28.54%
19 TO 24 MOS	201,650	17.60%
25 TO 30 MOS	132,180	11.54%
31 TO 36 MOS	<u>0</u>	<u>0.00%</u>
<b>TOTAL</b>	<u>\$1,145,605</u>	<u>100.00%</u>

***Maturity Limits Are In Compliance With The Orange County Treasurer's Investment Policy Statement***

Floating Rate Notes are deemed to have a maturity date equal to their next interest reset date.  
 At November 30, 2004, Floating Rate Notes comprise 22.35% of the O.C. Extended Fund

**ORANGE COUNTY TREASURER - TAX COLLECTOR**  
**ORANGE COUNTY AND EDUCATIONAL INVESTMENT POOLS**  
**MATURITIES DISTRIBUTION**

November 30, 2004



O.C. INVESTMENT POOL				
			In Thousands	%
Money Market Fund	1 TO 7 DAYS		\$238,377	7.28%
Money Market Fund	8 TO 30 DAYS		1,002,950	30.65%
Money Market Fund	31 TO 60 DAYS		192,829	5.89%
Money Market Fund	61 TO 90 DAYS		407,672	12.46%
Money Market Fund	91 TO 180 DAYS		199,250	6.09%
Money Market Fund	181 TO 395 DAYS		85,542	2.61%
Extended Fund	1 TO 7 DAYS		0	0.00%
Extended Fund	8 TO 30 DAYS		160,910	4.92%
Extended Fund	31 TO 60 DAYS		31,000	0.95%
Extended Fund	61 TO 90 DAYS		150,000	4.58%
Extended Fund	91 TO 180 DAYS		50,000	1.53%
Extended Fund	181 TO 395 DAYS		92,965	2.84%
Extended Fund	14 TO 18 MONTHS		326,900	10.00%
Extended Fund	19 TO 24 MONTHS		201,650	6.16%
Extended Fund	25 TO 30 MONTHS		132,180	4.04%
Extended Fund	31 TO 36 MONTHS		0	0.00%
<b>TOTAL</b>			<u>\$3,272,225</u>	<u>100.00%</u>

O.C. EDUCATIONAL MONEY MARKET FUND		
	In Thousands	%
1 TO 7 DAYS	\$262,611	15.32%
8 TO 30 DAYS	496,814	28.97%
31 TO 60 DAYS	529,175	30.86%
61 TO 90 DAYS	341,075	19.89%
91 TO 180 DAYS	35,000	2.04%
181 TO 395 DAYS	50,000	2.92%
<b>TOTAL</b>	<u>\$1,714,675</u>	<u>100.00%</u>

**Maturity Limits Are In Compliance With The Orange County Treasurer's Investment Policy Statement**

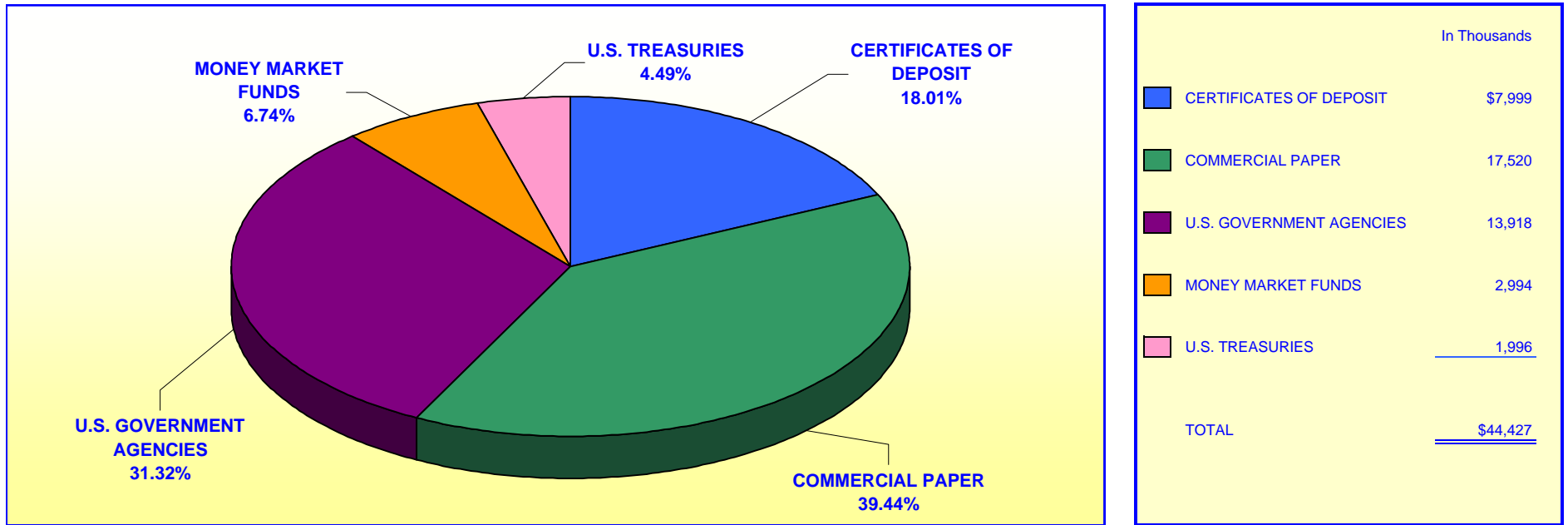
Floating Rate Notes are deemed to have a maturity date equal to their next interest reset date.  
 At November 30, 2004, Floating Rate Notes comprise 14.96% and 17.68% of the O.C. Investment Pool and Educational Money Market Fund respectively.

**ORANGE COUNTY TREASURER - TAX COLLECTOR**

**JOHN WAYNE AIRPORT INVESTMENT POOL**

**PORTFOLIO COMPOSITION \*\***

**November 30, 2004**



**Investment Composition Is In Compliance With The Orange County Treasurer's Investment Policy Statement**

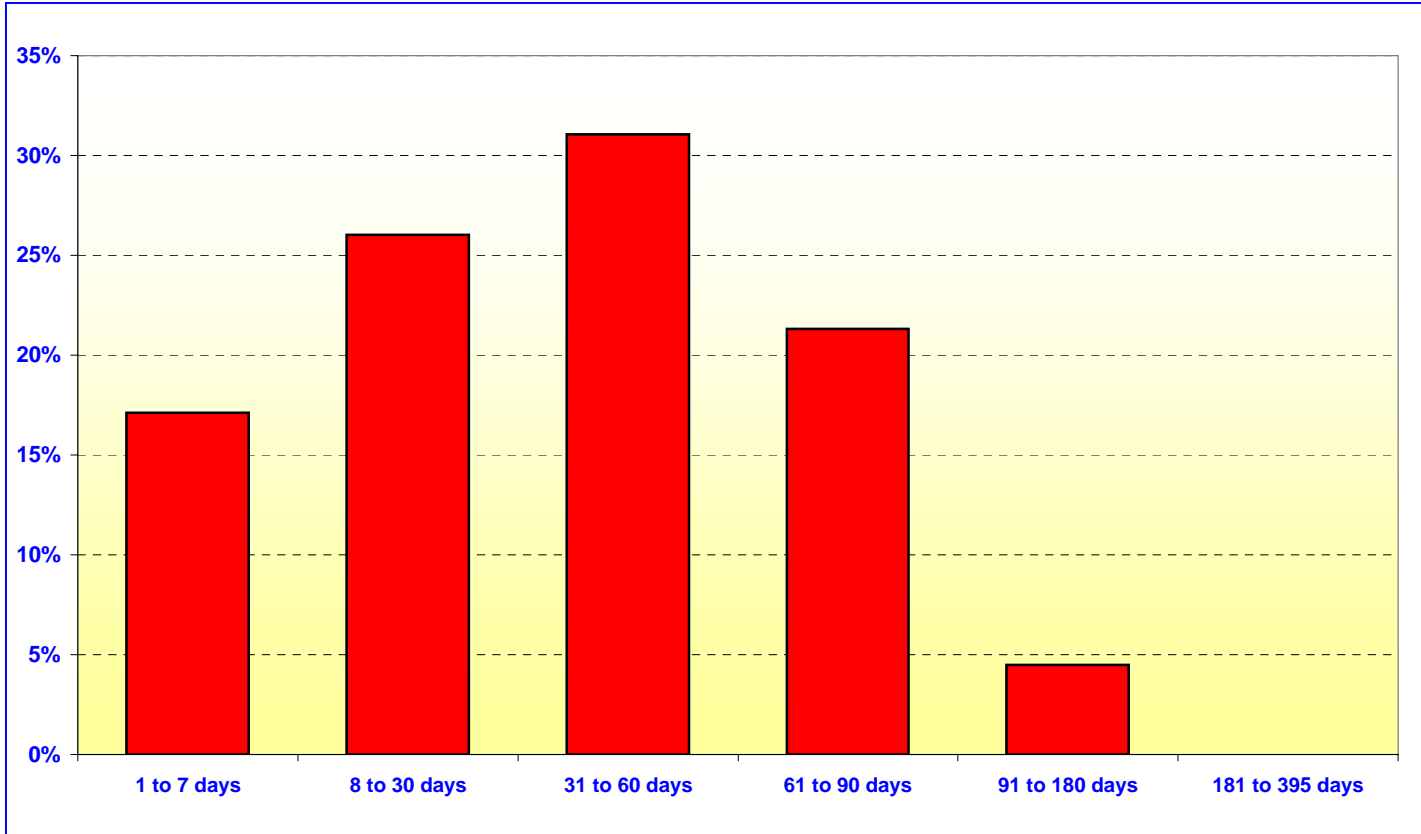
**\*\* Calculated Based Upon Market Value at 11/30/2004**

**ORANGE COUNTY TREASURER - TAX COLLECTOR**

**JOHN WAYNE AIRPORT INVESTMENT POOL**

**MATURITIES DISTRIBUTION**

**November 30, 2004**



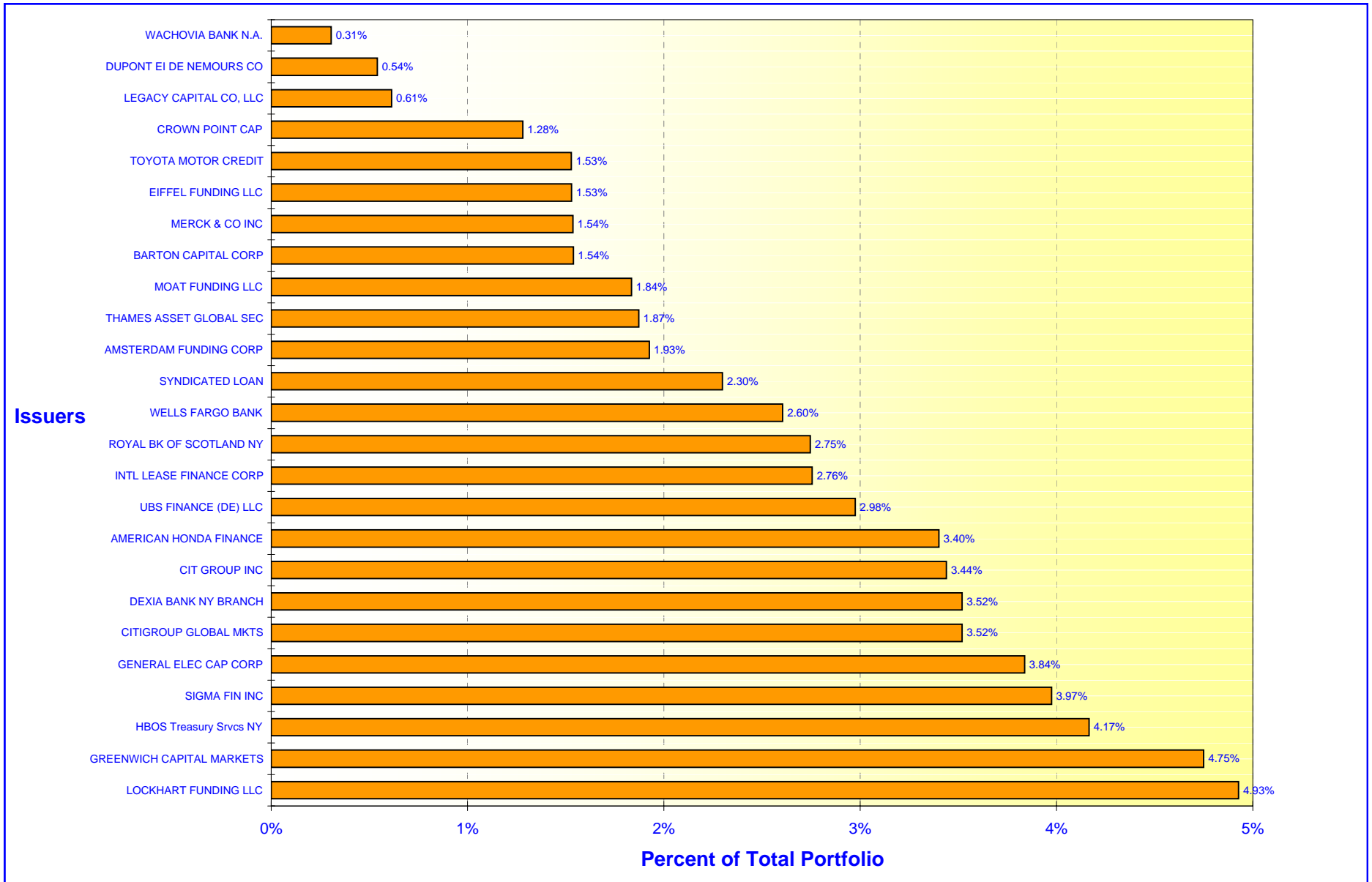
JOHN WAYNE AIRPORT		
	In Thousands	%
1 TO 7 DAYS	\$7,609	17.10%
8 TO 30 DAYS	11,575	26.01%
31 TO 60 DAYS	13,825	31.07%
61 TO 90 DAYS	9,486	21.32%
91 TO 180 DAYS	2,000	4.50%
181 TO 395 DAYS	0	0.00%
<b>TOTAL</b>	<b>\$44,495</b>	<b>100.00%</b>

*Maturity Limits Are In Compliance With The Orange County Treasurer's Investment Policy Statement*

# ORANGE COUNTY TREASURER - TAX COLLECTOR

## ORANGE COUNTY INVESTMENT POOL - ISSUER CONCENTRATION

November 30, 2004





# ORANGE COUNTY TREASURER - TAX COLLECTOR

## EDUCATIONAL INVESTMENT POOL - ISSUER CONCENTRATION

November 30, 2004

