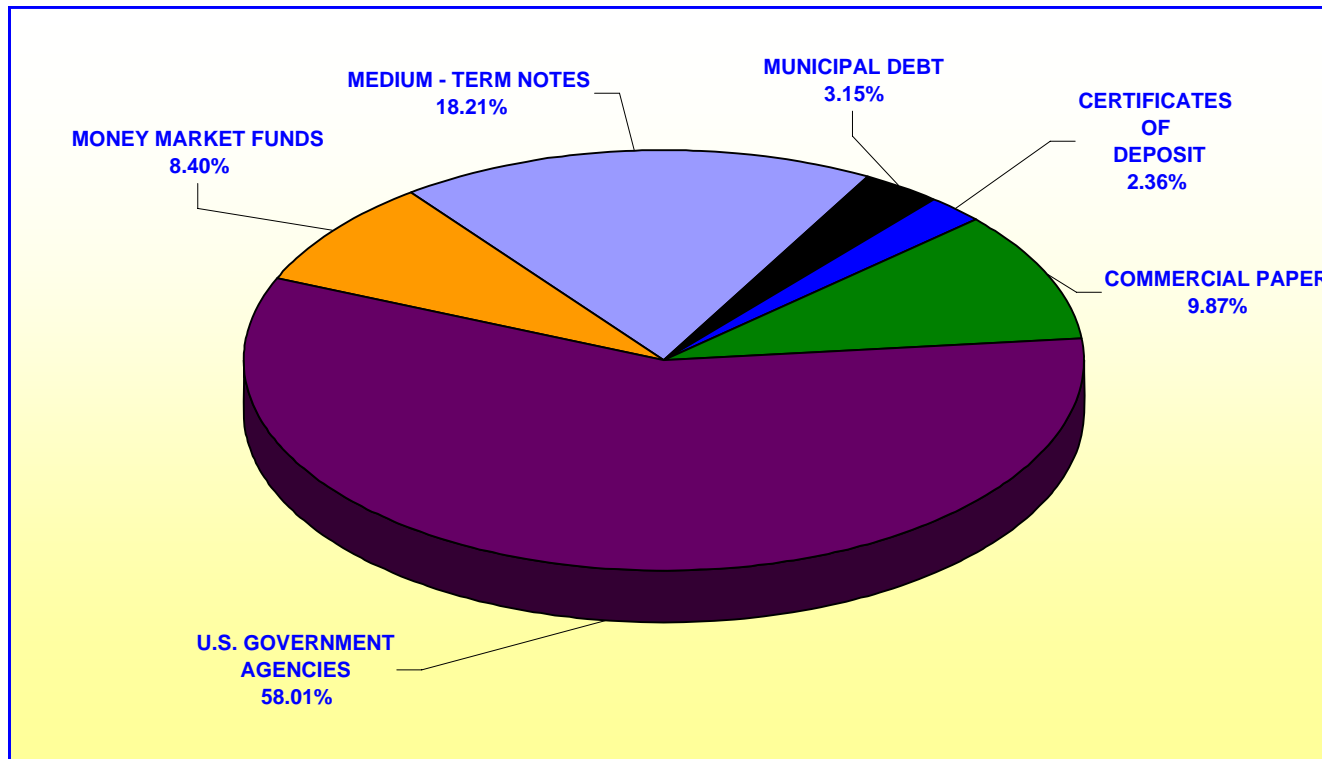


**ORANGE COUNTY TREASURER - TAX COLLECTOR  
ORANGE COUNTY INVESTMENT POOL  
PORTFOLIO COMPOSITION - COMBINED \*\***

**March 31, 2009**



In Thousands	
CERTIFICATES OF DEPOSIT	\$ 79,737
COMMERCIAL PAPER	332,941
U.S. GOVERNMENT AGENCIES	1,956,917
MONEY MARKET FUNDS	283,368
MEDIUM-TERM NOTES	614,421
MUNICIPAL DEBT	<u>106,141</u>
<b>TOTAL</b>	<b><u>\$ 3,373,525</u></b>

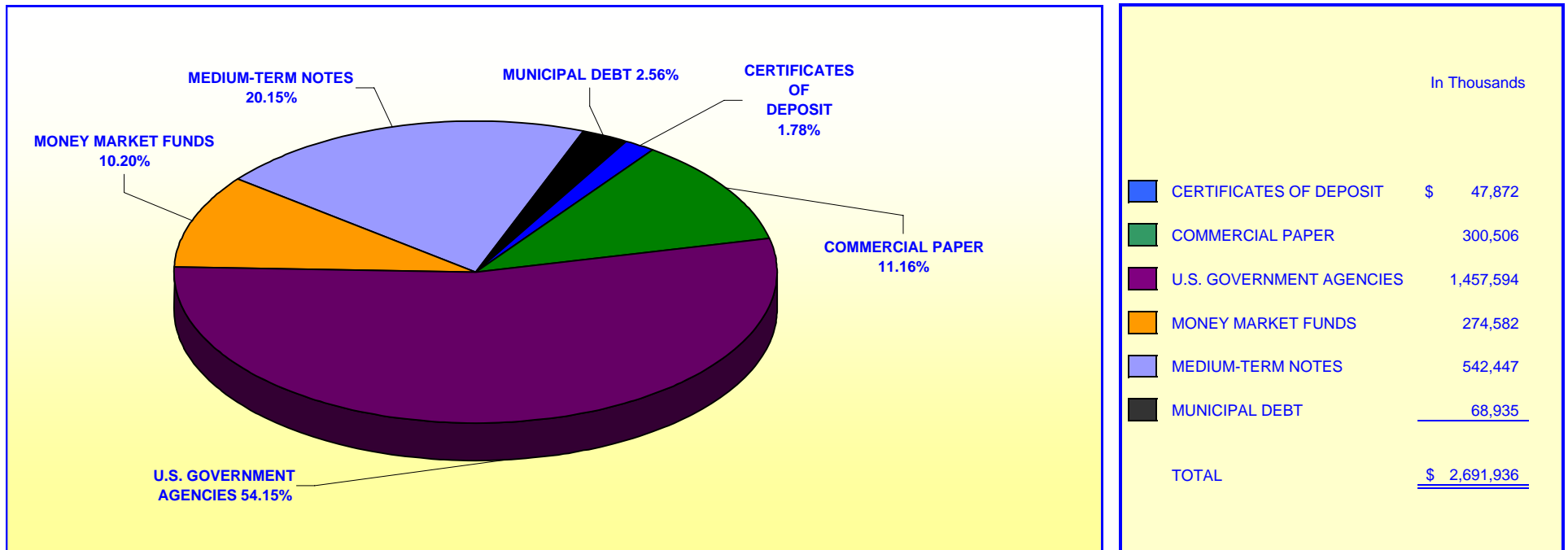
*Investment Composition Is In Compliance With The Orange County Treasurer's Investment Policy Statement*

*\*County Investment Pool Includes: Money Market Fund, Extended Fund, & Extended Fund B*

*\*\* Calculated Using Market Value at 3/31/2009*

**ORANGE COUNTY TREASURER - TAX COLLECTOR  
ORANGE COUNTY EDUCATIONAL INVESTMENT POOL  
PORTFOLIO COMPOSITION - COMBINED \*\***

**March 31, 2009**



***Investment Composition Is In Compliance With The Orange County Treasurer's Investment Policy Statement***

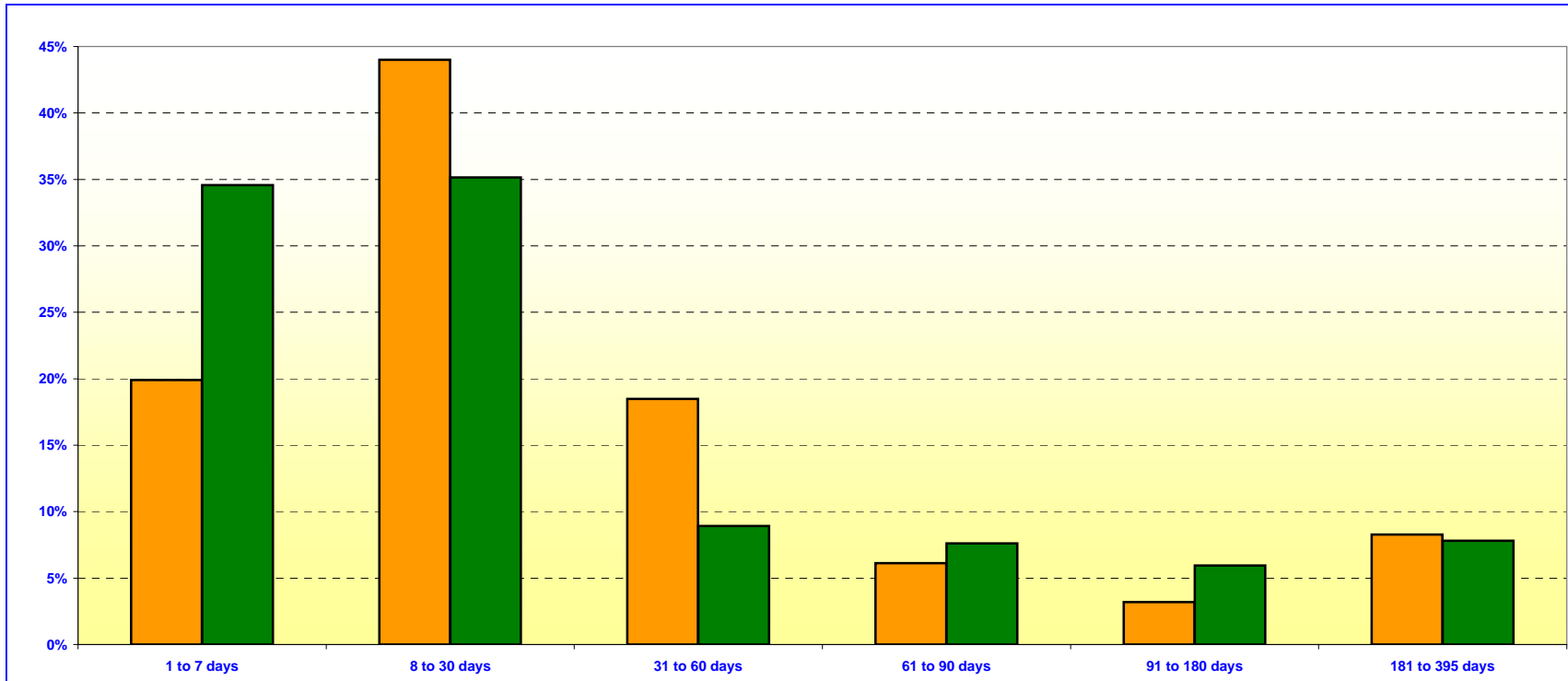
***\*Educational Investment Pool Includes: Money Market Fund, Extended Fund, & Extended Fund B***

***\*\* Calculated Using Market Value at 3/31/2009***

**ORANGE COUNTY TREASURER - TAX COLLECTOR**  
**ORANGE COUNTY MONEY MARKET FUND AND EDUCATIONAL MONEY MARKET FUND**

**MATURITIES DISTRIBUTION**

March 31, 2009



<b>O.C. INVESTMENT POOL MONEY MARKET FUND</b>		
	In Thousands	%
1 TO 7 DAYS	\$ 403,968	19.91%
8 TO 30 DAYS	892,727	44.00%
31 TO 60 DAYS	375,000	18.48%
61 TO 90 DAYS	124,400	6.13%
91 TO 180 DAYS	65,000	3.20%
181 TO 395 DAYS	167,966	8.28%
<b>TOTAL</b>	<b>\$ 2,029,061</b>	<b>100.00%</b>

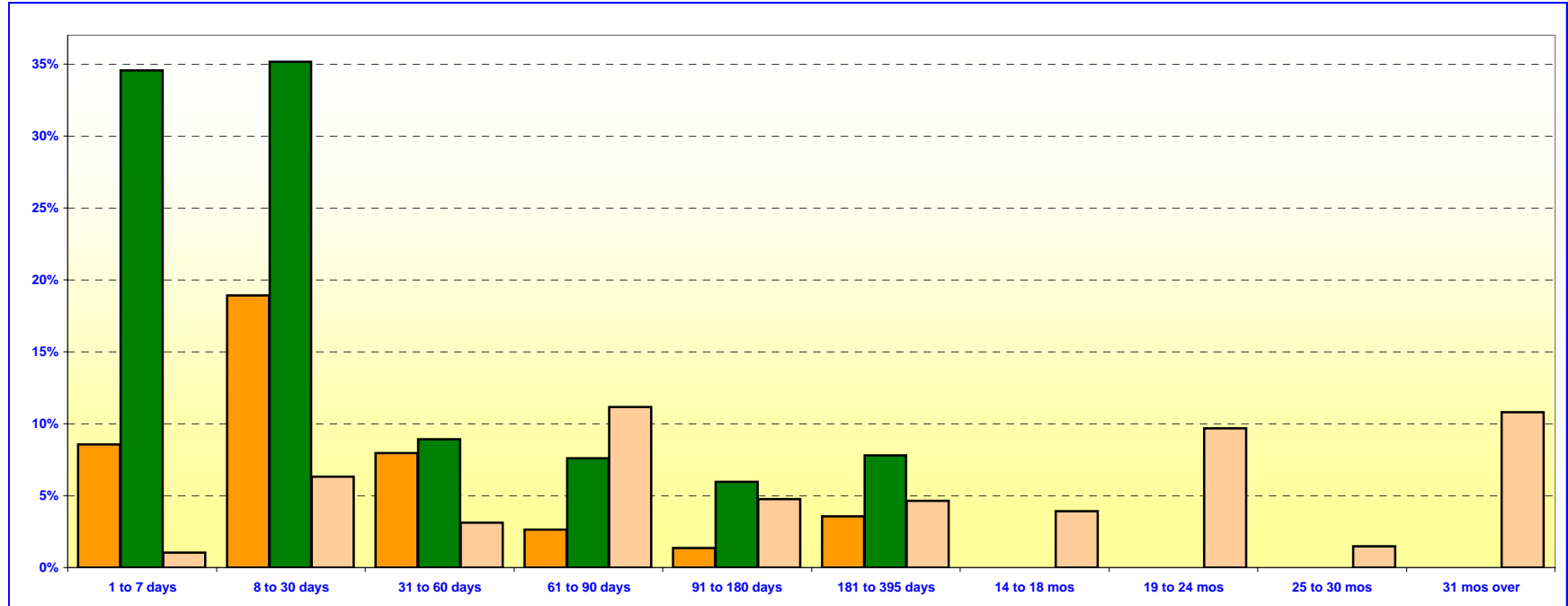
<b>O.C. EDUCATIONAL MONEY MARKET FUND</b>		
	In Thousands	%
1 TO 7 DAYS	\$ 462,782	34.57%
8 TO 30 DAYS	470,500	35.14%
31 TO 60 DAYS	119,423	8.92%
61 TO 90 DAYS	101,777	7.60%
91 TO 180 DAYS	79,600	5.95%
181 TO 395 DAYS	104,668	7.82%
<b>TOTAL</b>	<b>\$ 1,338,750</b>	<b>100.00%</b>

***Maturity Limits Are In Compliance With The Orange County Treasurer's Investment Policy Statement***

Floating Rate Notes are deemed to have a maturity date equal to their next interest reset date.  
 At March 31, 2009 Floating Rate Notes comprise 27.38% and 32.22% of the O.C. Money Market Fund and Educational Money Market Fund respectively.

**ORANGE COUNTY TREASURER - TAX COLLECTOR**  
**ORANGE COUNTY AND EDUCATIONAL INVESTMENT POOLS**  
**MATURITIES DISTRIBUTION**

March 31, 2009



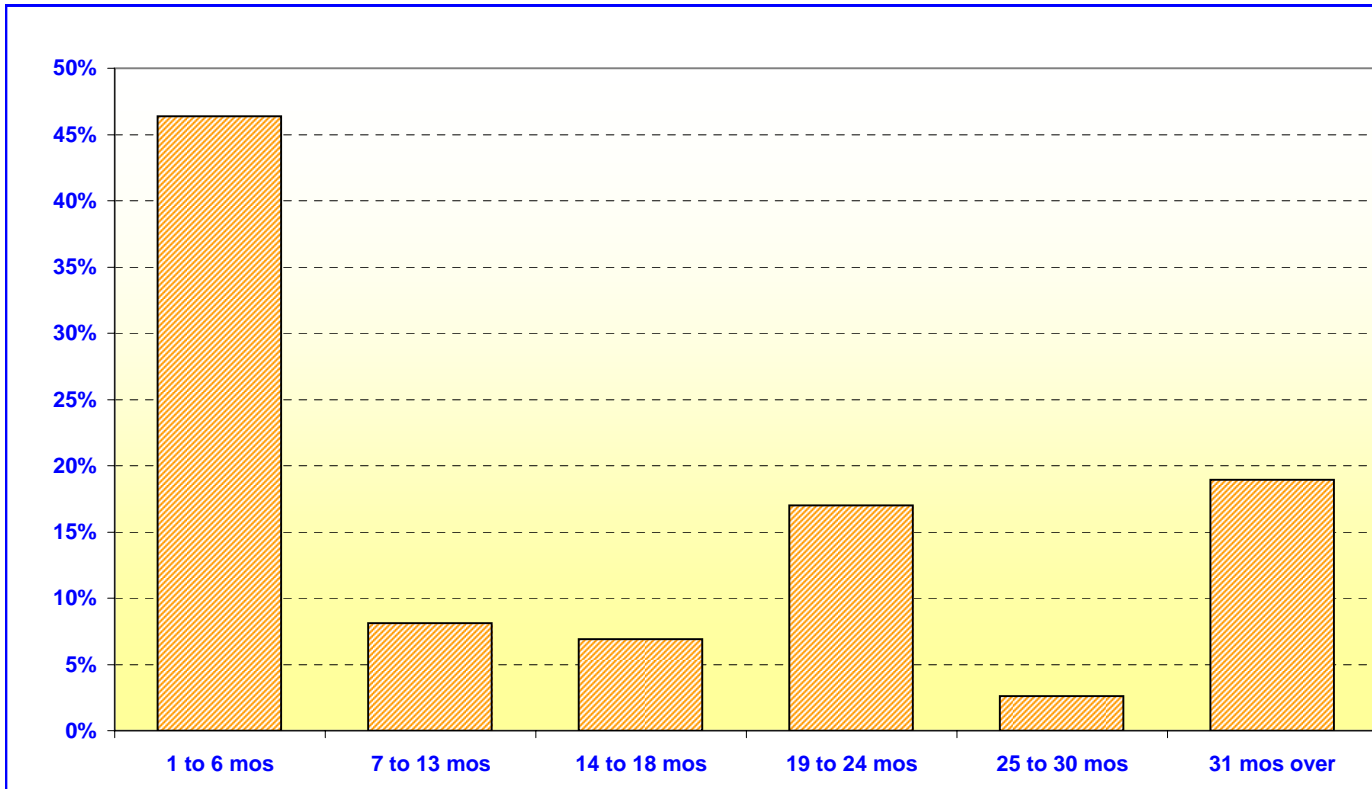
<b>O.C. INVESTMENT POOL</b>				
(includes MMF, Extended Fund, & Extended Fund B)				
			In Thousands	%
Money Market Fund	1 TO 7 DAYS	\$	403,968	8.57%
Money Market Fund	8 TO 30 DAYS		892,727	18.92%
Money Market Fund	31 TO 60 DAYS		375,000	7.95%
Money Market Fund	61 TO 90 DAYS		124,400	2.64%
Money Market Fund	91 TO 180 DAYS		65,000	1.38%
Money Market Fund	181 TO 395 DAYS		167,966	3.56%
Extended Fund	1 TO 7 DAYS		50,000	1.06%
Extended Fund	8 TO 30 DAYS		297,303	6.31%
Extended Fund	31 TO 60 DAYS		147,300	3.12%
Extended Fund	61 TO 90 DAYS		526,500	11.17%
Extended Fund	91 TO 180 DAYS		224,740	4.77%
Extended Fund	181 TO 395 DAYS		218,635	4.64%
Extended Fund	14 TO 18 MONTHS		185,675	3.94%
Extended Fund	19 TO 24 MONTHS		456,810	9.69%
Extended Fund	25 TO 30 MONTHS		70,000	1.48%
Extended Fund	31 MOS OVER		509,325	10.80%
<b>TOTAL</b>			<b>\$ 4,715,349</b>	<b>100.00%</b>

<b>O.C. EDUCATIONAL MONEY MARKET FUND</b>		
	In Thousands	%
1 TO 7 DAYS	\$ 462,782	34.57%
8 TO 30 DAYS	470,500	35.14%
31 TO 60 DAYS	119,423	8.92%
61 TO 90 DAYS	101,777	7.60%
91 TO 180 DAYS	79,600	5.95%
181 TO 395 DAYS	104,668	7.82%
<b>TOTAL</b>		<b>\$ 1,338,750 100.00%</b>

**Maturity Limits Are In Compliance With The Orange County Treasurer's Investment Policy Statement**

Floating Rate Notes are deemed to have a maturity date equal to their next interest reset date.  
 At March 31, 2009, Floating Rate Notes comprise 28.96% and 32.22% of the O.C. Investment Pool and Educational Money Market Fund respectively.

**ORANGE COUNTY TREASURER - TAX COLLECTOR**  
**ORANGE COUNTY INVESTMENT POOL - EXTENDED FUND**  
**MATURITIES DISTRIBUTION**  
**March 31, 2009**



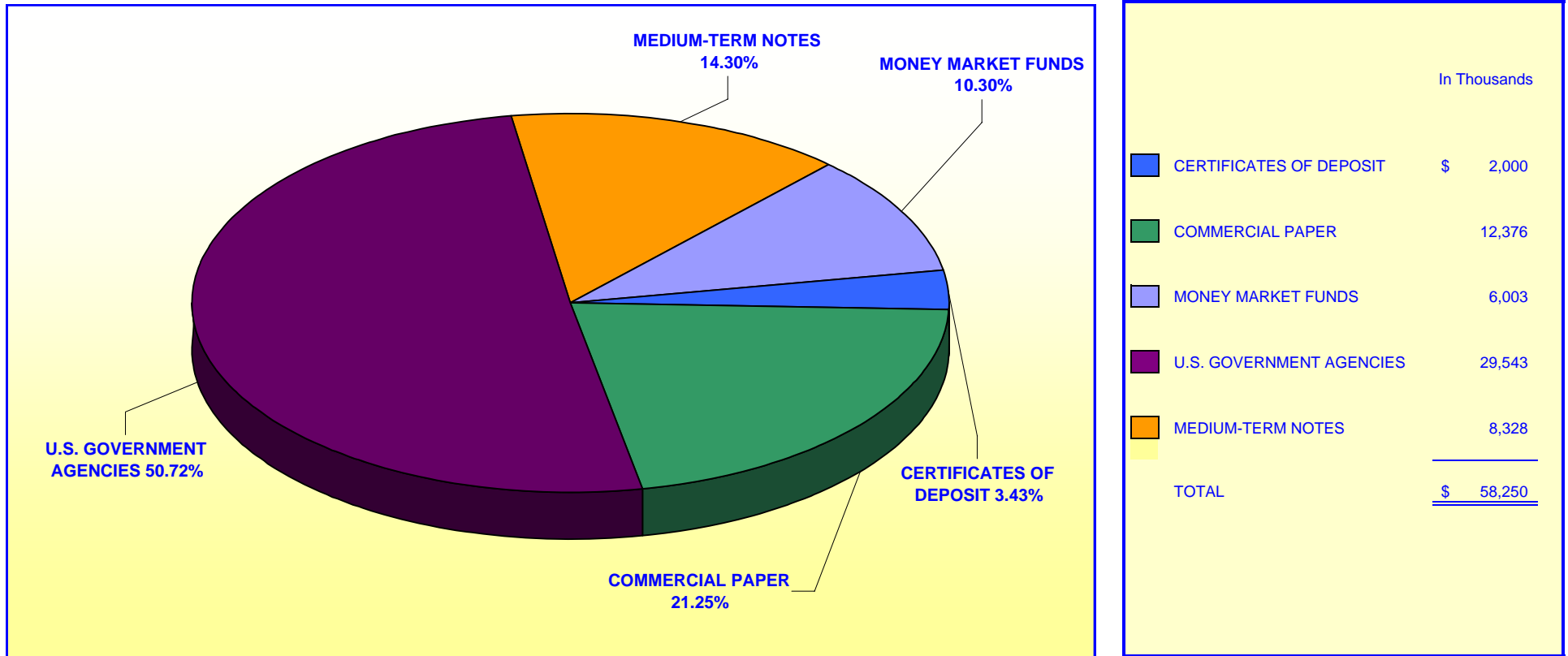
<b>O.C. INVESTMENT POOL EXTENDED FUND</b> (includes Extended Fund B)		
	In Thousands	%
1 TO 6 MOS	\$ 1,245,843	46.38%
7 TO 13 MOS	218,635	8.14%
14 TO 18 MOS	185,675	6.91%
19 TO 24 MOS	456,810	17.01%
25 TO 30 MOS	70,000	2.60%
31 TO 36 MOS	<u>509,325</u>	<u>18.96%</u>
<b>TOTAL</b>	<u><b>\$ 2,686,288</b></u>	<u><b>100.00%</b></u>

***Maturity Limits Are In Compliance With The Orange County Treasurer's Investment Policy Statement***

Floating Rate Notes are deemed to have a maturity date equal to their next interest reset date.  
 At March 31, 2009, Floating Rate Notes comprise 30.15% of the O.C. Extended Fund.

**ORANGE COUNTY TREASURER - TAX COLLECTOR  
JOHN WAYNE AIRPORT INVESTMENT POOL  
PORTFOLIO COMPOSITION \*\***

**March 31, 2009**



*Investment Composition Is In Compliance With The Orange County Treasurer's Investment Policy Statement*

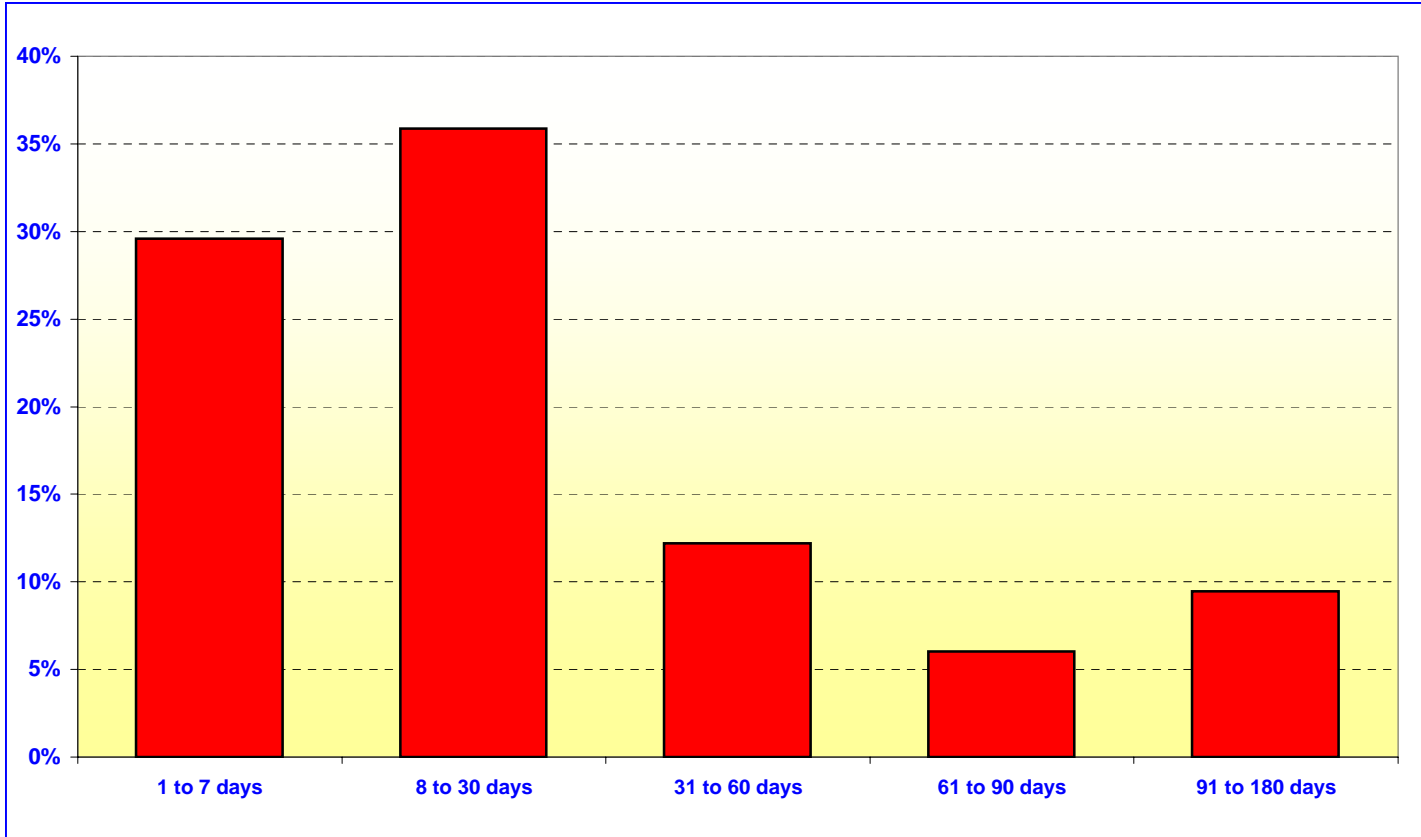
*\*\* Calculated Using Market Value at 3/31/2009*

**ORANGE COUNTY TREASURER - TAX COLLECTOR**

**JOHN WAYNE AIRPORT INVESTMENT POOL**

**MATURITIES DISTRIBUTION**

**March 31, 2009**



JOHN WAYNE AIRPORT		
	In Thousands	%
1 TO 7 DAYS	\$ 17,209	29.58%
8 TO 30 DAYS	20,879	35.88%
31 TO 60 DAYS	7,100	12.20%
61 TO 90 DAYS	3,500	6.02%
91 TO 180 DAYS	5,500	9.45%
181 TO 395 DAYS	4,000	6.87%
<b>TOTAL</b>	<b>\$ 58,188</b>	<b>100.00%</b>

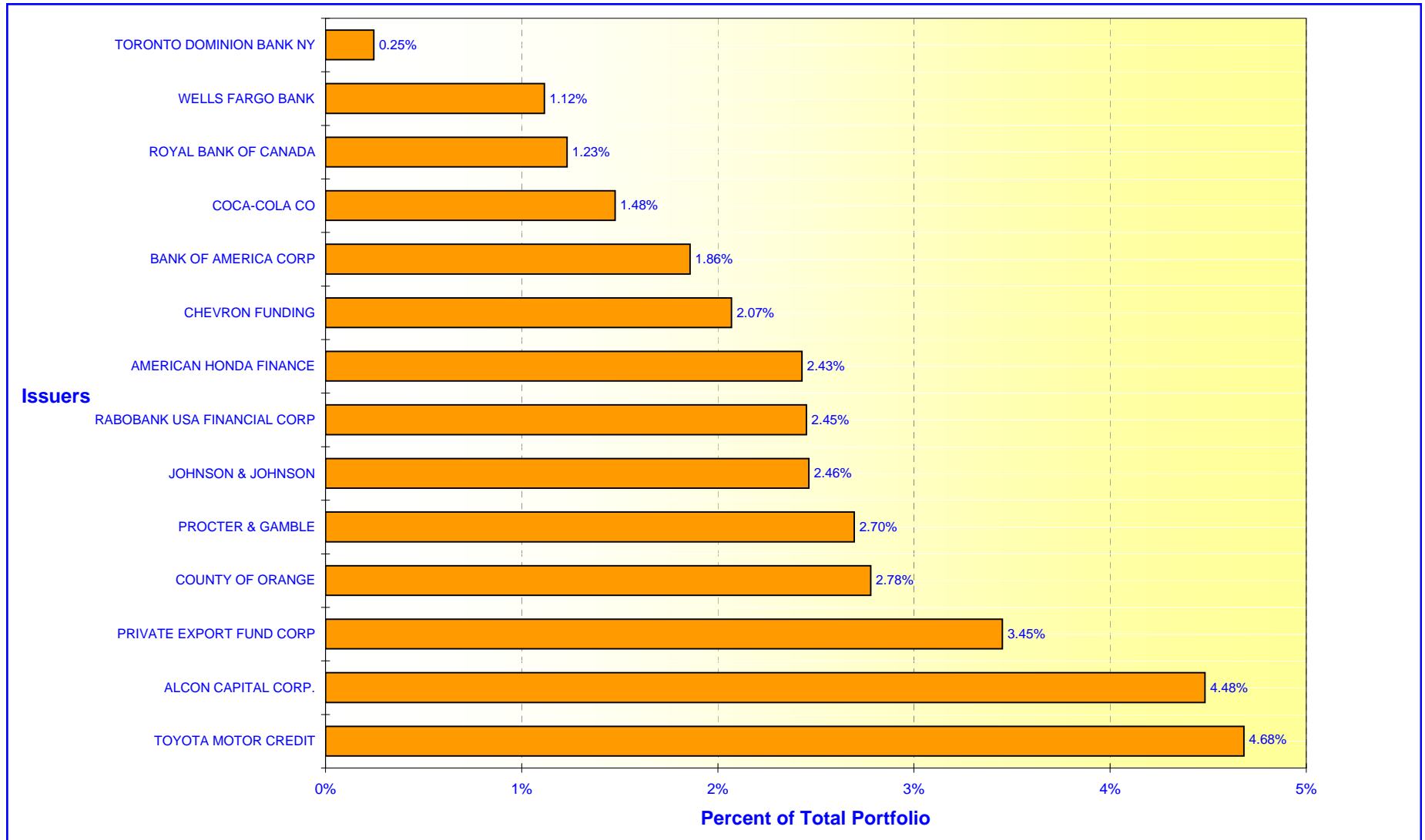
***Maturity Limits Are In Compliance With The Orange County Treasurer's Investment Policy Statement***

Floating Rate Notes are deemed to have a maturity date equal to their next interest reset date.  
 At March 31, 2009, Floating Rate Notes comprise 30.93% of the John Wayne Airport

# ORANGE COUNTY TREASURER - TAX COLLECTOR

## ORANGE COUNTY INVESTMENT POOL - ISSUER CONCENTRATION

March 31, 2009

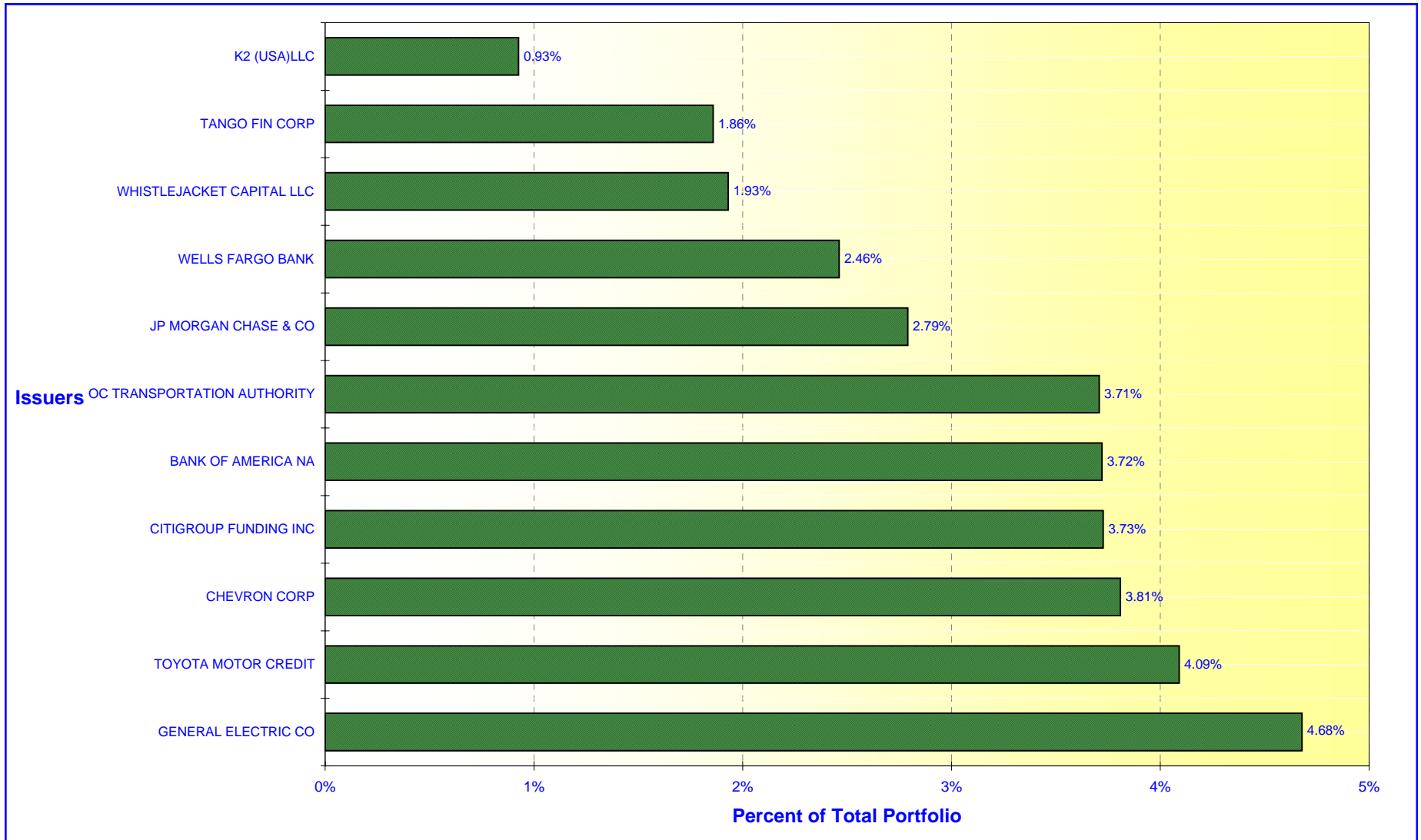




# ORANGE COUNTY TREASURER - TAX COLLECTOR

## ORANGE COUNTY EXTENDED FUND - ISSUER CONCENTRATION

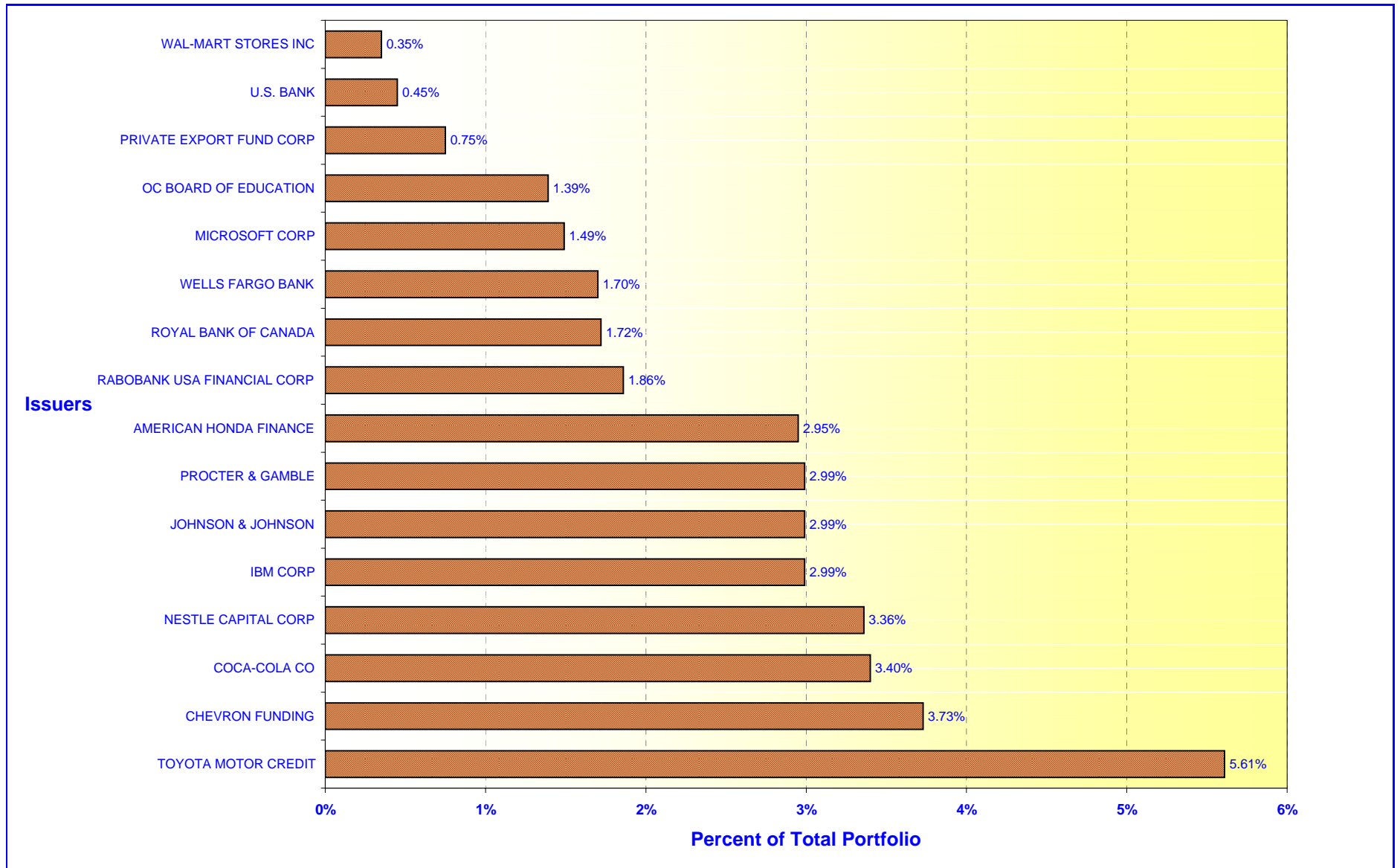
March 31, 2009



Note: Extended Fund includes Extended Fund B

**ORANGE COUNTY TREASURER - TAX COLLECTOR**  
**EDUCATIONAL INVESTMENT POOL - ISSUER CONCENTRATION**

March 31, 2009



**NOTE: See noncompliance report summary for issuers over 5%**