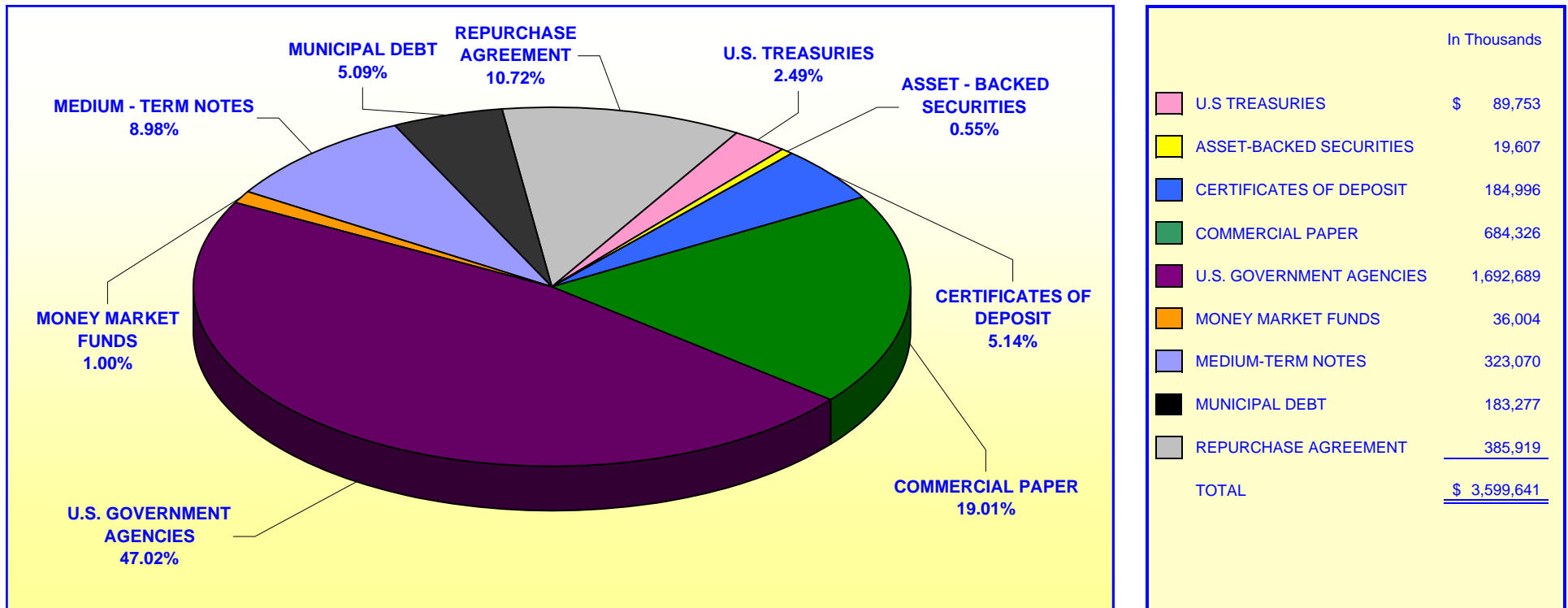


**ORANGE COUNTY TREASURER - TAX COLLECTOR  
ORANGE COUNTY INVESTMENT POOL  
PORTFOLIO COMPOSITION - COMBINED \*\***

**March 31, 2010**



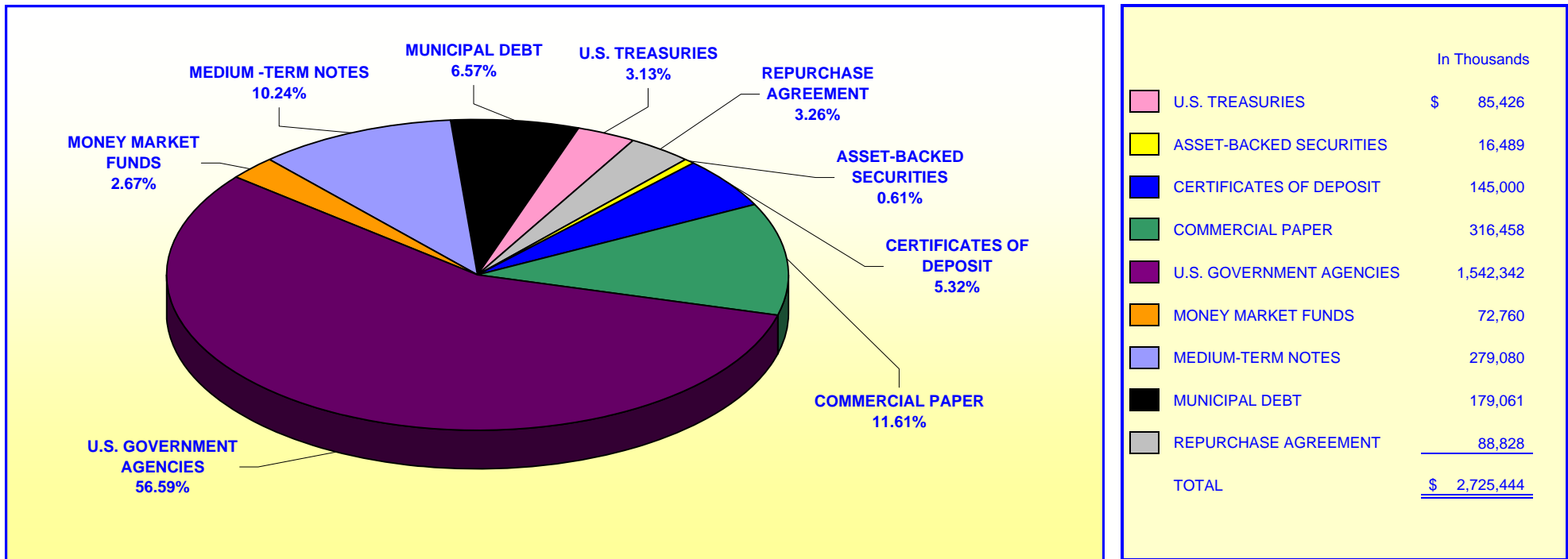
**Investment Composition Is In Compliance With The Orange County Treasurer's Investment Policy Statement**

**\*County Investment Pool Includes: Money Market Fund, Extended Fund, & Extended Fund B**

**\*\* Calculated Using Market Value at 03/31/2010**

**ORANGE COUNTY TREASURER - TAX COLLECTOR  
ORANGE COUNTY EDUCATIONAL INVESTMENT POOL  
PORTFOLIO COMPOSITION - COMBINED \*\***

**March 31, 2010**



**Investment Composition Is In Compliance With The Orange County Treasurer's Investment Policy Statement**

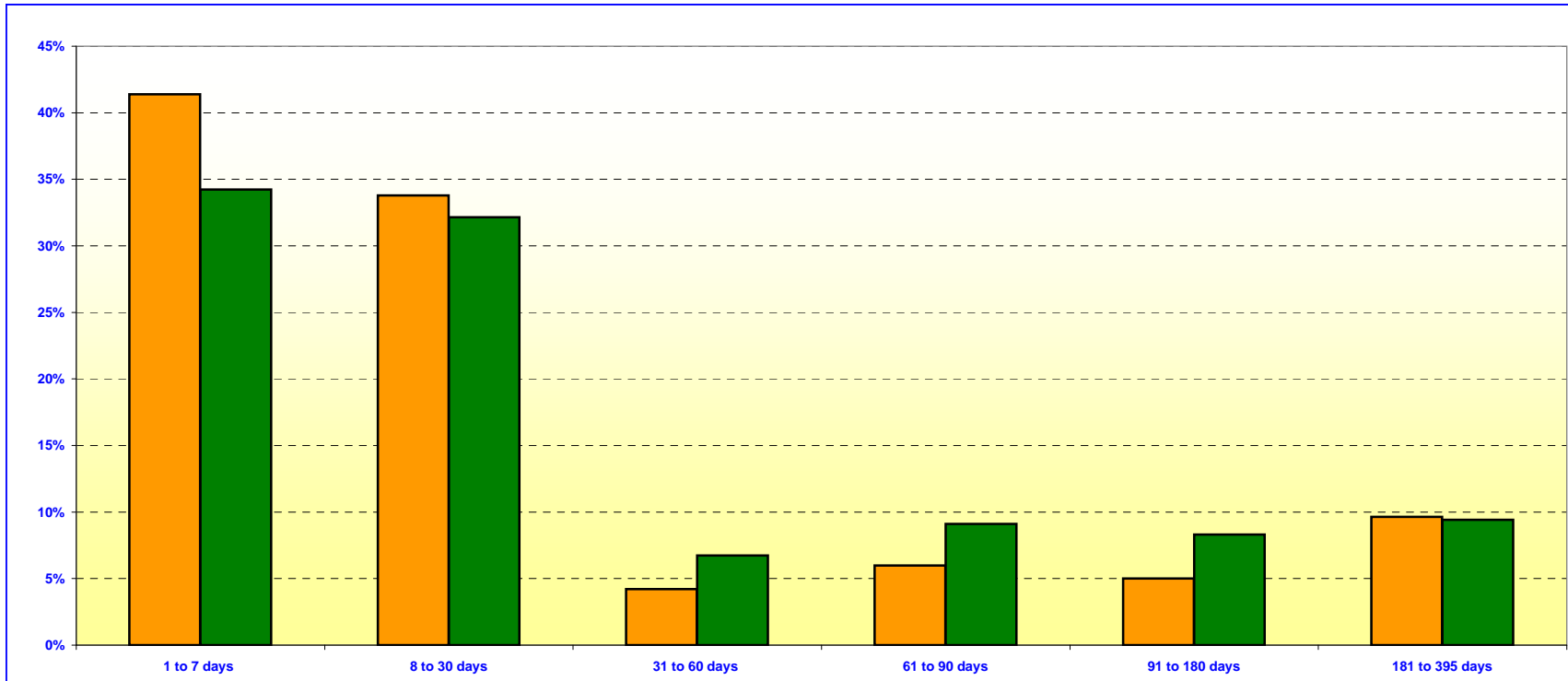
**\*Educational Investment Pool Includes: Money Market Fund, Extended Fund, & Extended Fund B**

**\*\* Calculated Using Market Value at 03/31/2010**

**ORANGE COUNTY TREASURER - TAX COLLECTOR**  
**ORANGE COUNTY MONEY MARKET FUND AND EDUCATIONAL MONEY MARKET FUND**

**MATURITIES DISTRIBUTION**

March 31, 2010



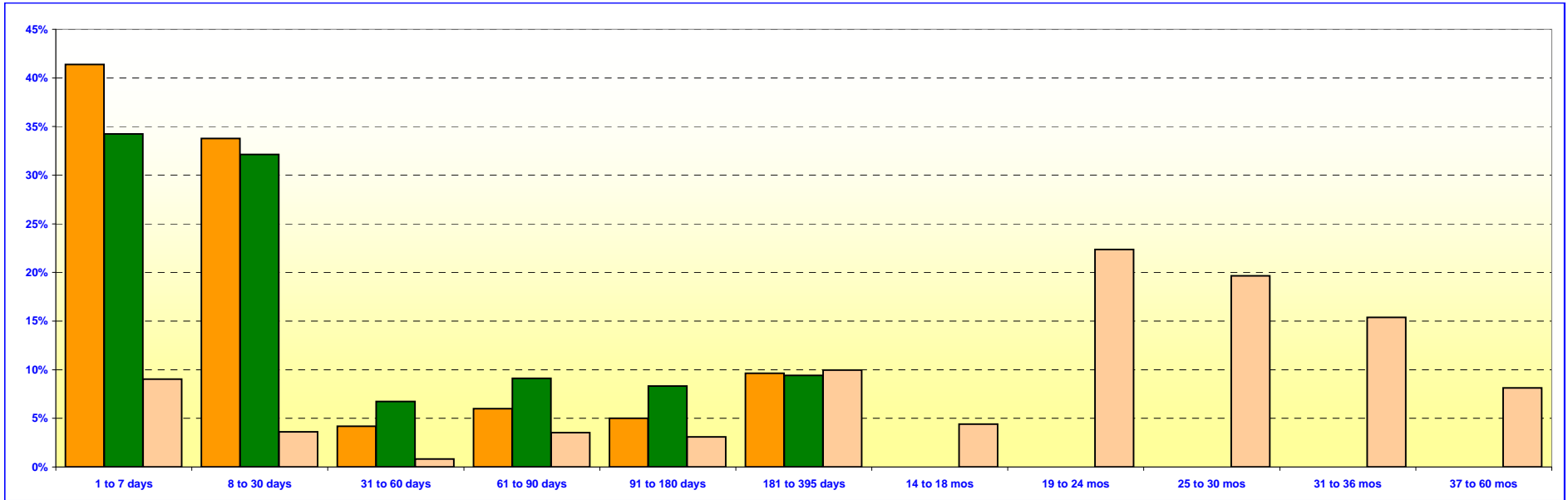
<b>O.C. INVESTMENT POOL MONEY MARKET FUND</b>		
	In Thousands	%
1 TO 7 DAYS	\$ 902,223	41.39%
8 TO 30 DAYS	736,241	33.78%
31 TO 60 DAYS	91,642	4.20%
61 TO 90 DAYS	130,500	5.99%
91 TO 180 DAYS	109,065	5.00%
181 TO 395 DAYS	210,054	9.64%
<b>TOTAL</b>	<b>\$ 2,179,725</b>	<b>100.00%</b>

<b>O.C. EDUCATIONAL MONEY MARKET FUND</b>		
	In Thousands	%
1 TO 7 DAYS	\$ 471,513	34.24%
8 TO 30 DAYS	442,530	32.15%
31 TO 60 DAYS	92,820	6.74%
61 TO 90 DAYS	125,490	9.12%
91 TO 180 DAYS	114,475	8.32%
181 TO 395 DAYS	129,755	9.43%
<b>TOTAL</b>	<b>\$ 1,376,583</b>	<b>100.00%</b>

***Maturity Limits Are In Compliance With The Orange County Treasurer's Investment Policy Statement***

Floating Rate Notes are deemed to have a maturity date equal to their next interest reset date.  
 At 03/31/2010 Floating Rate Notes comprise 31.94% and 42.48% of the O.C. Money Market Fund and Educational Money Market Fund respectively.

**ORANGE COUNTY TREASURER - TAX COLLECTOR  
ORANGE COUNTY AND EDUCATIONAL INVESTMENT POOLS  
MATURITIES DISTRIBUTION  
March 31, 2010**



O.C. INVESTMENT POOL MONEY MARKET FUND		
	In Thousands	%
1 TO 7 DAYS	\$ 902,223	41.39%
8 TO 30 DAYS	736,241	33.78%
31 TO 60 DAYS	91,642	4.20%
61 TO 90 DAYS	130,500	5.99%
91 TO 180 DAYS	109,065	5.00%
181 TO 395 DAYS	210,054	9.64%
<b>TOTAL</b>	<b>\$ 2,179,725</b>	<b>100.00%</b>

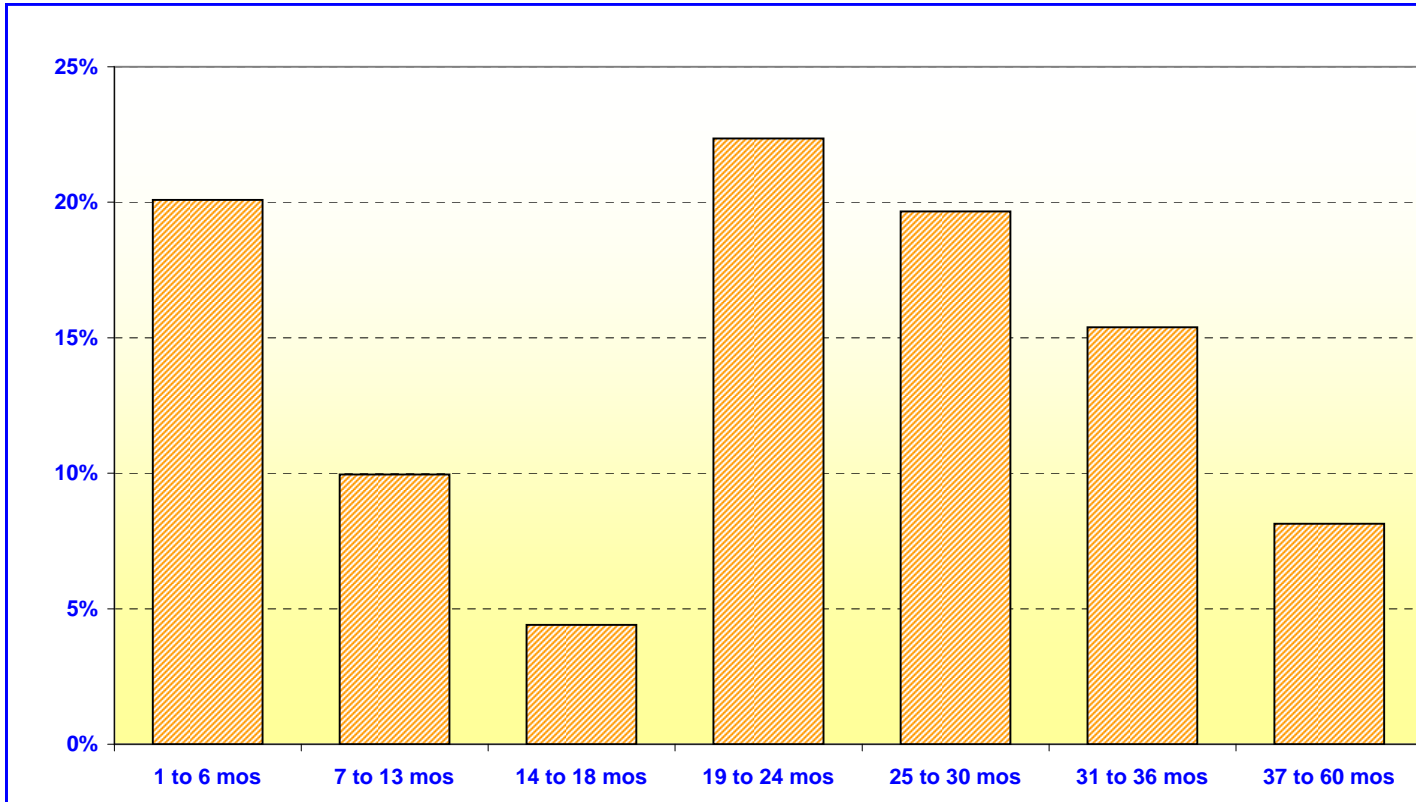
O.C. EDUCATIONAL MONEY MARKET FUND		
	In Thousands	%
1 TO 7 DAYS	\$ 471,513	34.24%
8 TO 30 DAYS	442,530	32.15%
31 TO 60 DAYS	92,820	6.74%
61 TO 90 DAYS	125,490	9.12%
91 TO 180 DAYS	114,475	8.32%
181 TO 395 DAYS	129,755	9.43%
<b>TOTAL</b>	<b>\$ 1,376,583</b>	<b>100.00%</b>

O.C. INVESTMENT POOL EXTENDED FUND (Included Extended Fund B)		
	In Thousands	%
1 TO 7 DAYS	\$ 249,762	9.03%
8 TO 30 DAYS	99,803	3.61%
31 TO 60 DAYS	22,300	0.81%
61 TO 90 DAYS	97,853	3.54%
91 TO 180 DAYS	85,675	3.10%
181 TO 395 DAYS	275,000	9.95%
14 TO 18 MONTHS	121,870	4.41%
19 TO 24 MONTHS	618,325	22.36%
25 TO 30 MONTHS	543,695	19.66%
31 TO 36 MONTHS	425,520	15.39%
37 TO 60 MONTHS	225,000	8.14%
<b>TOTAL</b>	<b>\$ 2,764,803</b>	<b>100.00%</b>

*Maturity Limits Are In Compliance With The Orange County Treasurer's Investment Policy Statement*

Floating Rate Notes are deemed to have a maturity date equal to their next interest reset date.  
At 03/31/2010, Floating Rate Notes comprise 31.94%, 2.79%, and 42.48% of the O.C. Money Market Funds, Extended Funds, and Educational Money Market Fund respectively.

**ORANGE COUNTY TREASURER - TAX COLLECTOR**  
**ORANGE COUNTY - EXTENDED FUND**  
**MATURITIES DISTRIBUTION**  
**March 31, 2010**



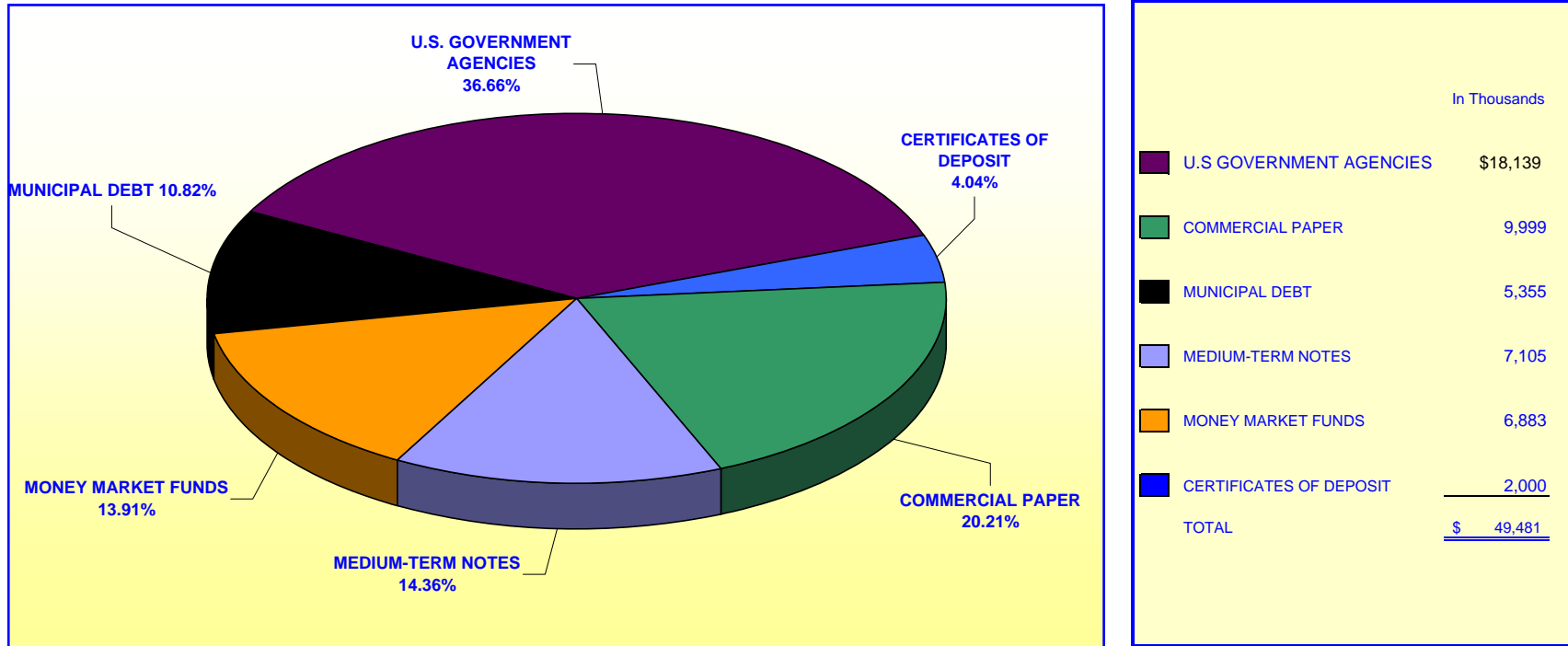
<b>ORANGE COUNTY EXTENDED FUND</b> (includes Extended Fund B)		
	In Thousands	%
1 TO 6 MOS	\$ 555,393	20.09%
7 TO 13 MOS	275,000	9.95%
14 TO 18 MOS	121,870	4.41%
19 TO 24 MOS	618,325	22.36%
25 TO 30 MOS	543,695	19.66%
31 TO 36 MOS	425,520	15.39%
37 TO 60 MOS	<u>225,000</u>	<u>8.14%</u>
<b>TOTAL</b>	<u>\$ 2,764,803</u>	<u>100.00%</u>

***Maturity Limits Are In Compliance With The Orange County Treasurer's Investment Policy Statement***

Floating Rate Notes are deemed to have a maturity date equal to their next interest reset date.  
 At 03/31/2010, Floating Rate Notes comprise 2.79% of the O.C. Extended Fund.

**ORANGE COUNTY TREASURER - TAX COLLECTOR  
JOHN WAYNE AIRPORT INVESTMENT POOL  
PORTFOLIO COMPOSITION \*\***

March 31, 2010



*Investment Composition Is In Compliance With The Orange County Treasurer's Investment Policy Statement*

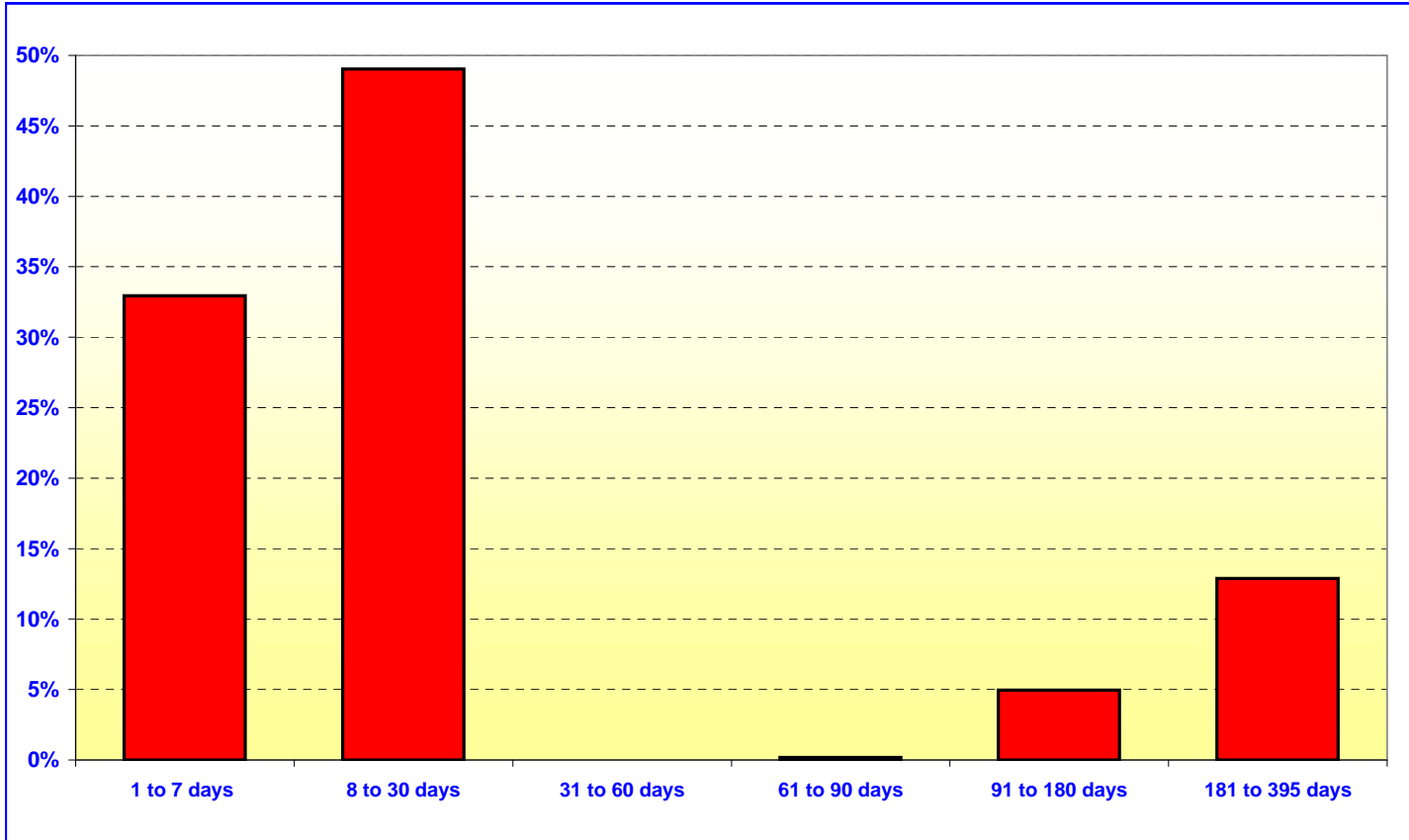
*\*\* Calculated Using Market Value at 03/31/2010*

**ORANGE COUNTY TREASURER - TAX COLLECTOR**

**JOHN WAYNE AIRPORT INVESTMENT POOL**

**MATURITIES DISTRIBUTION**

**March 31, 2010**



JOHN WAYNE AIRPORT		
	In Thousands	%
1 TO 7 DAYS	\$ 16,238	32.94%
8 TO 30 DAYS	24,176	49.04%
31 TO 60 DAYS	-	0.00%
61 TO 90 DAYS	90	0.18%
91 TO 180 DAYS	2,440	4.95%
181 TO 395 DAYS	6,350	12.89%
<b>TOTAL</b>	<b>\$ 49,294</b>	<b>100.00%</b>

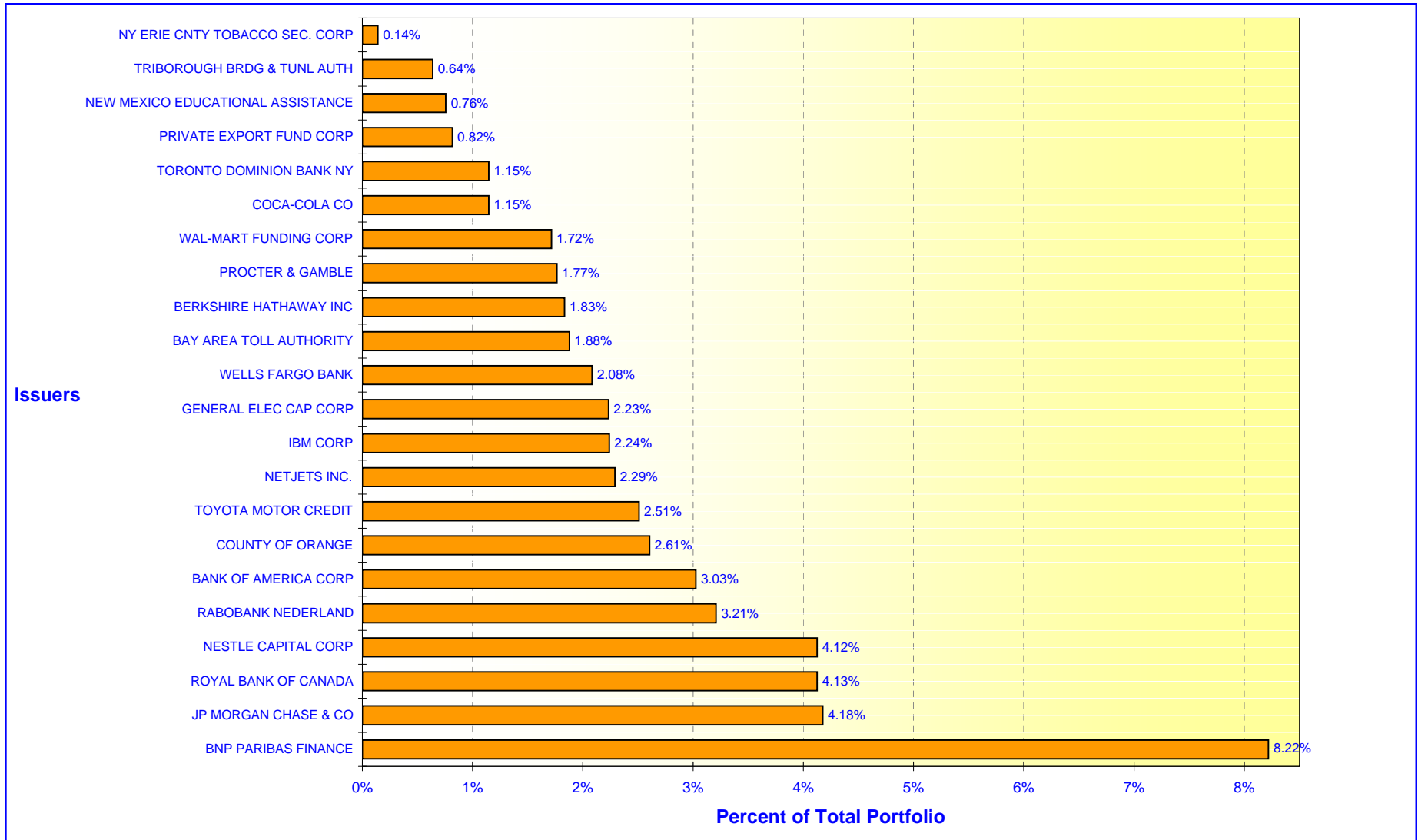
*Maturity Limits Are In Compliance With The Orange County Treasurer's Investment Policy Statement*

Floating Rate Notes are deemed to have a maturity date equal to their next interest reset date.  
 At 03/31/2010, Floating Rate Notes comprise 29.12% of the John Wayne Airport

# ORANGE COUNTY TREASURER - TAX COLLECTOR

## ORANGE COUNTY MONEY MARKET FUND - ISSUER CONCENTRATION

March 31, 2010



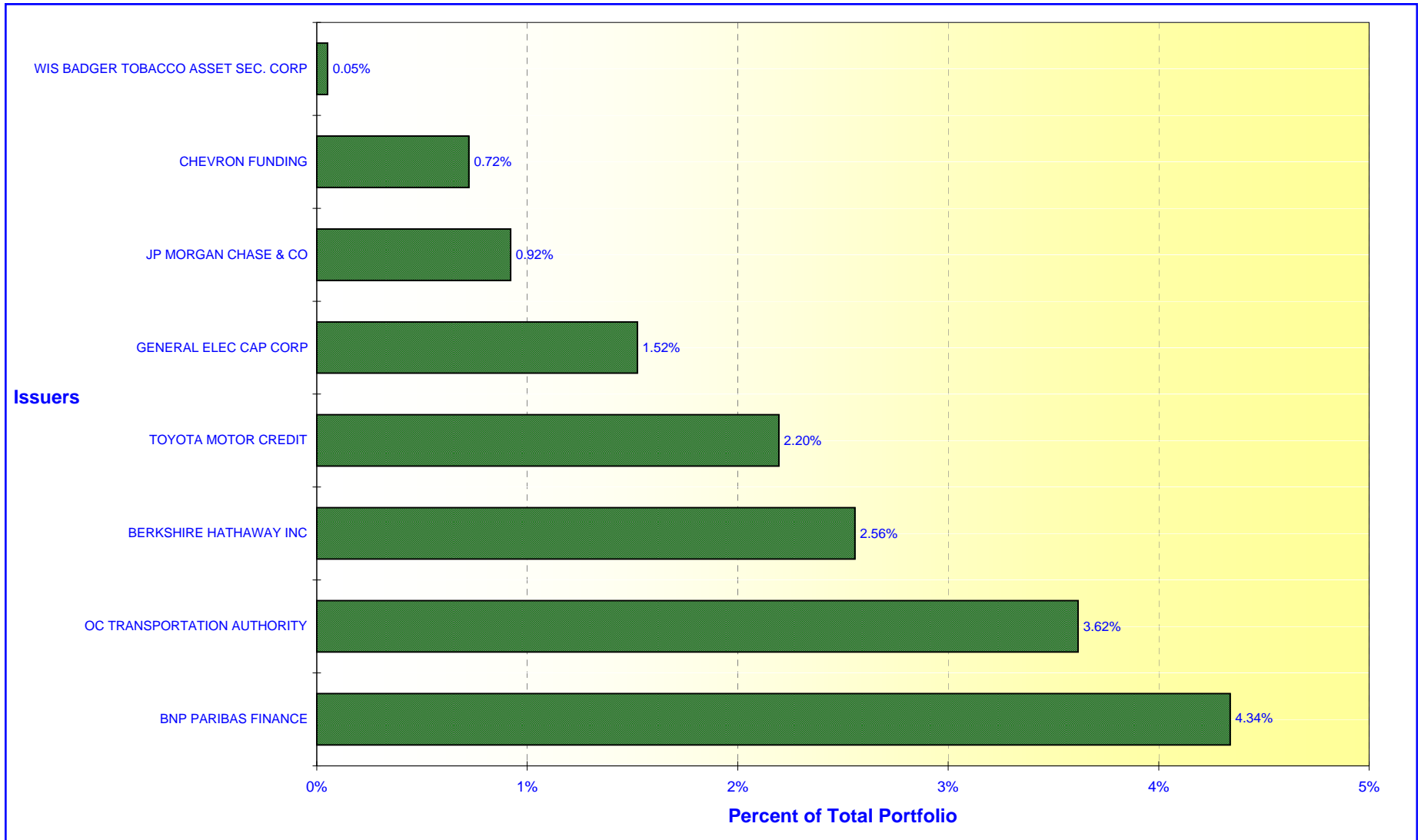
**NOTE: See Non-Compliance Report for issuers over 5%**



# ORANGE COUNTY TREASURER - TAX COLLECTOR

## ORANGE COUNTY EXTENDED FUND - ISSUER CONCENTRATION

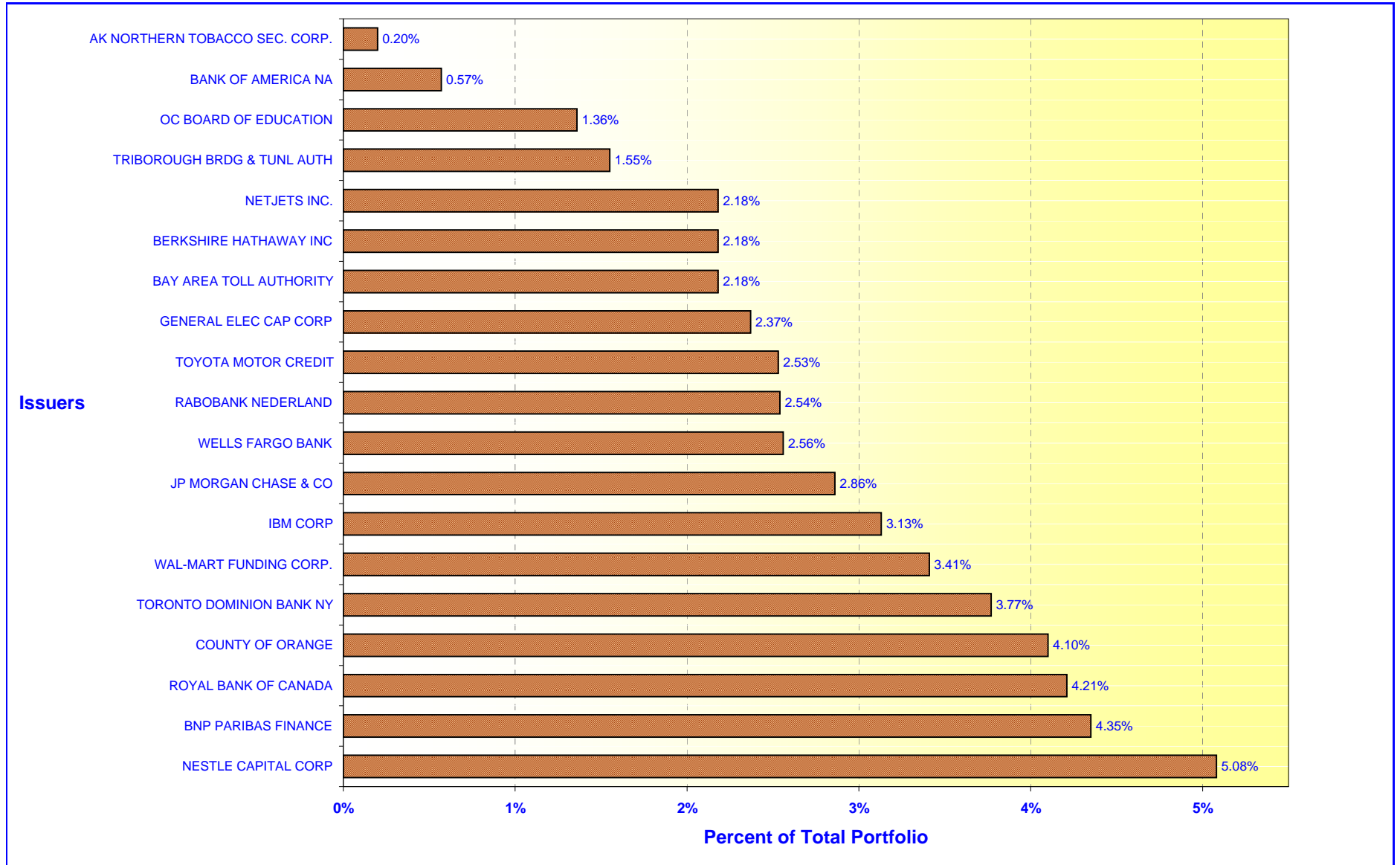
March 31, 2010



# ORANGE COUNTY TREASURER - TAX COLLECTOR

## EDUCATIONAL MONEY MARKET FUND - ISSUER CONCENTRATION

March 31, 2010



**NOTE: See Non-Compliance Report for issuers over 5%**